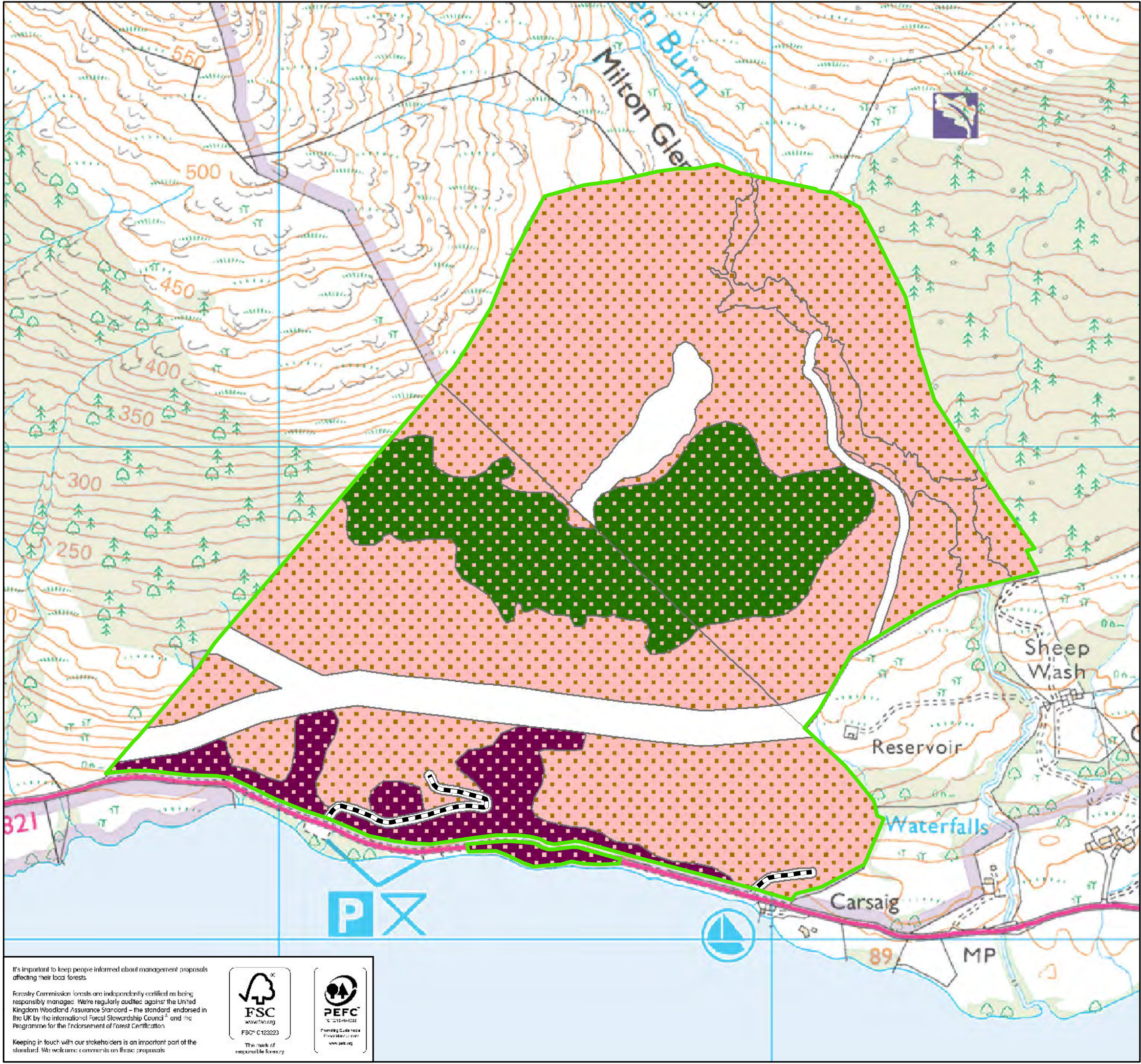
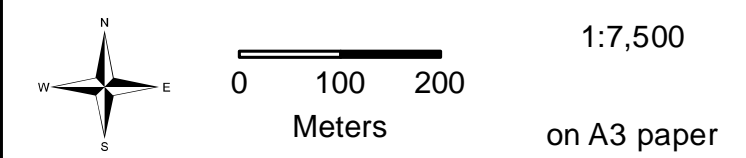


Milton

Restock



- Birch and other native broadleaves
- Oak and other native broadleaves
- Scots pine and native broadleaves
- Open ground
- Forest roads
- Land management plan area



It's important to keep people informed about management proposals affecting their local forests.

Forestry Commission forests are independently certified as being responsibly managed. We're regularly audited against the United Kingdom Woodland Assurance Standard – the standard endorsed in the UK by the International Forest Stewardship Council² and the Programme for the Endorsement of Forest Certification.

Keeping in touch with our stakeholders is an important part of the standard. We welcome comments on these proposals.



Reproduced by permission of Ordnance Survey on behalf of HMSO. © Crown copyright and database right [2016]. All rights reserved. Ordnance Survey Licence number [100021242]

