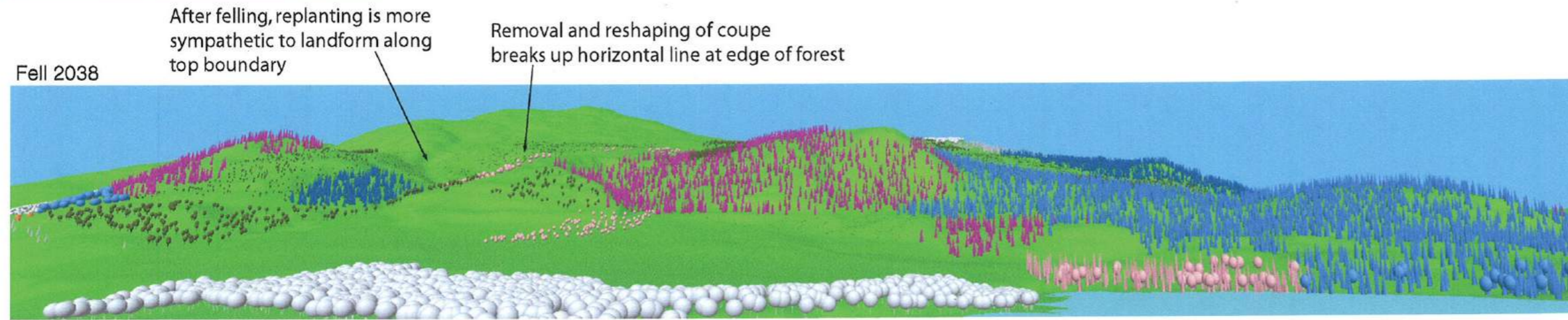
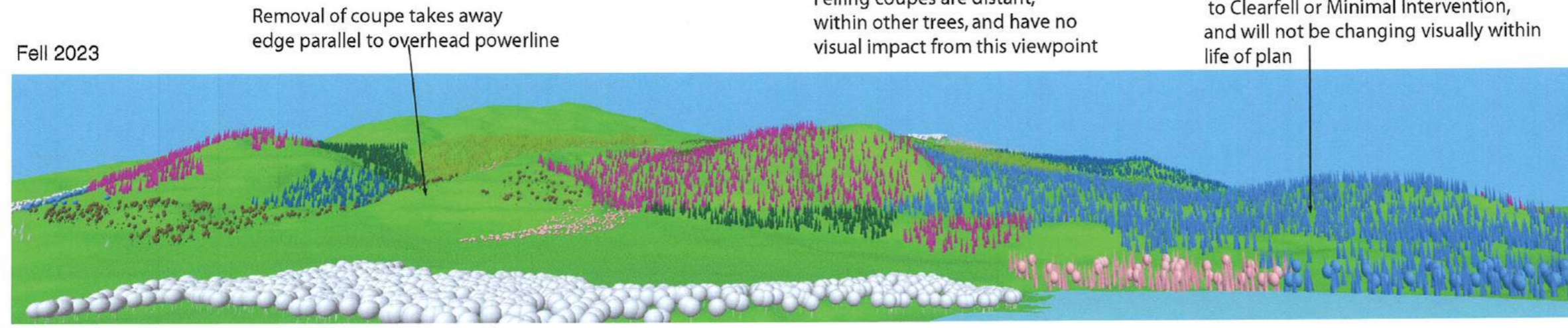
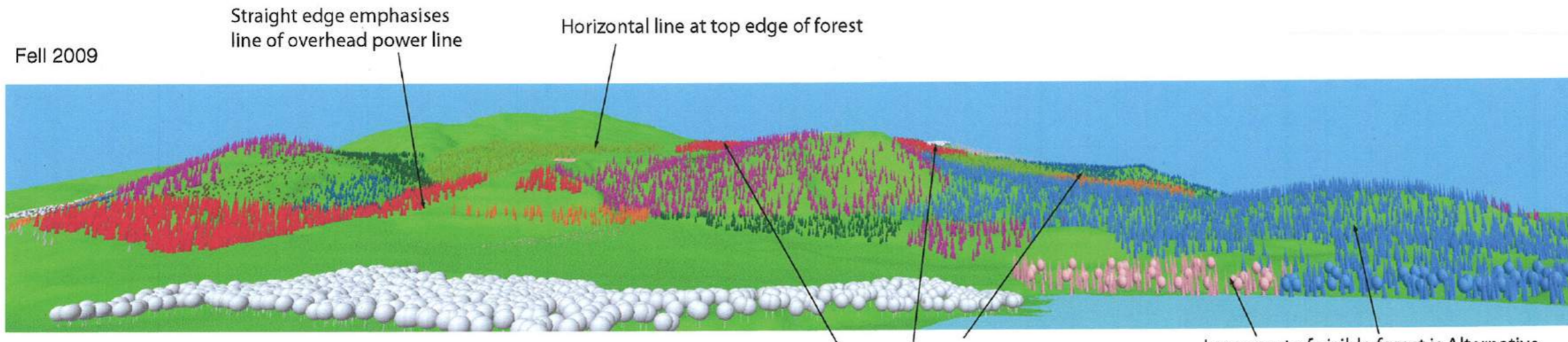
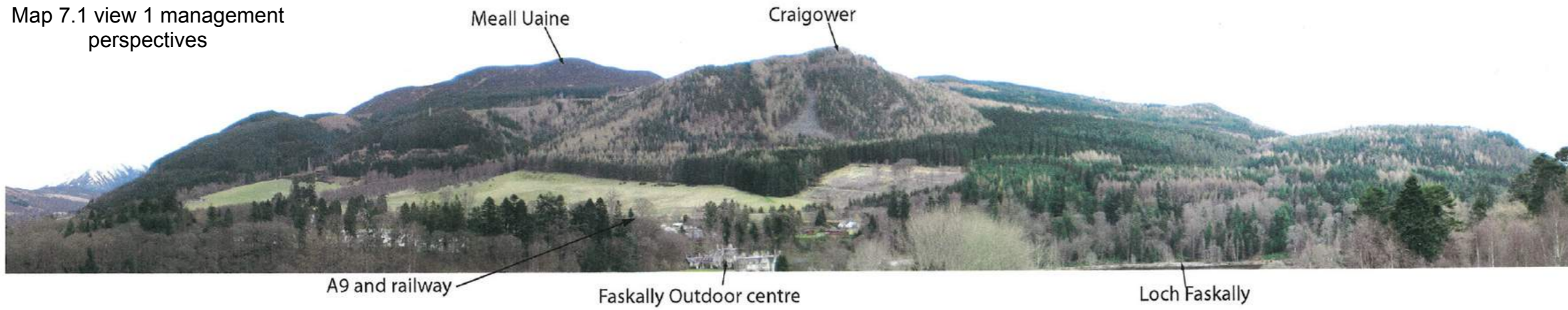
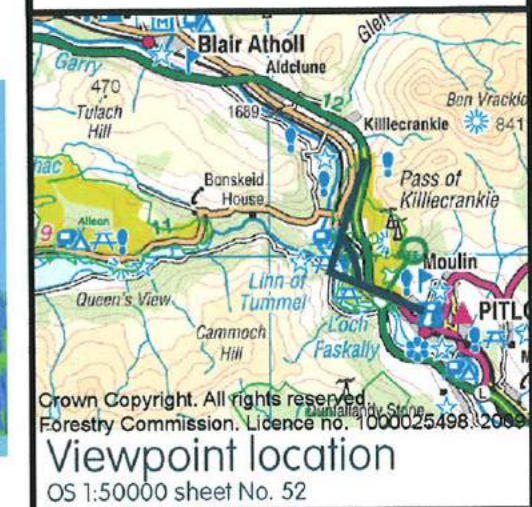


Map 7.1 view 1 management perspectives



Fell Key

| | |
|--|--------------------------|
| | 2009 - 2013 |
| | 2014 - 2018 |
| | 2019 - 2023 |
| | 2024 - 2028 |
| | 2029 - 2033 |
| | 2034 - 2038 |
| | Outwith plan |
| | Alternative to clearfell |
| | Natural reserve |
| | Young plantation |
| | Minimal intervention |
| | Neighbouring woodland |
| | Open area |

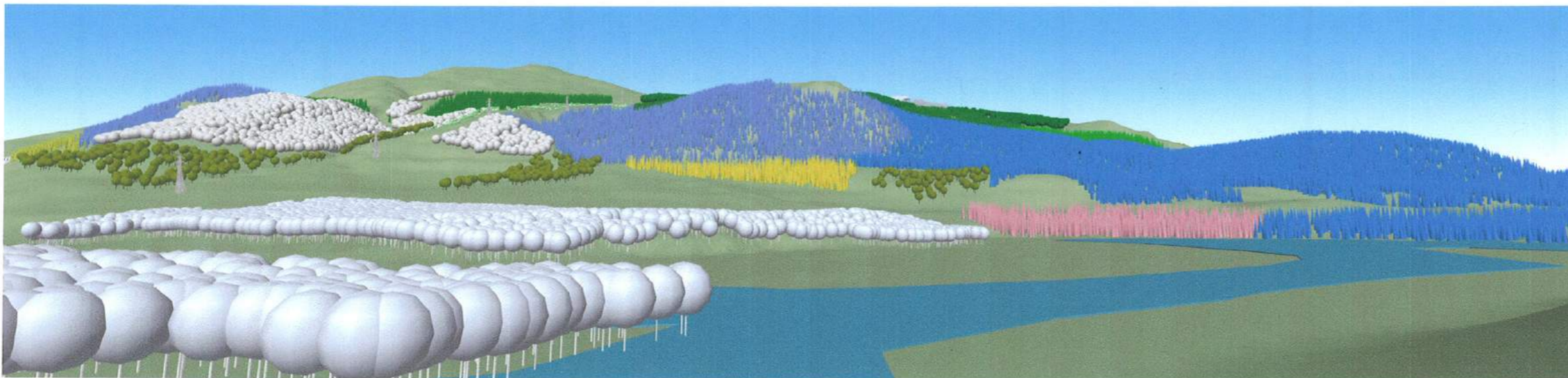
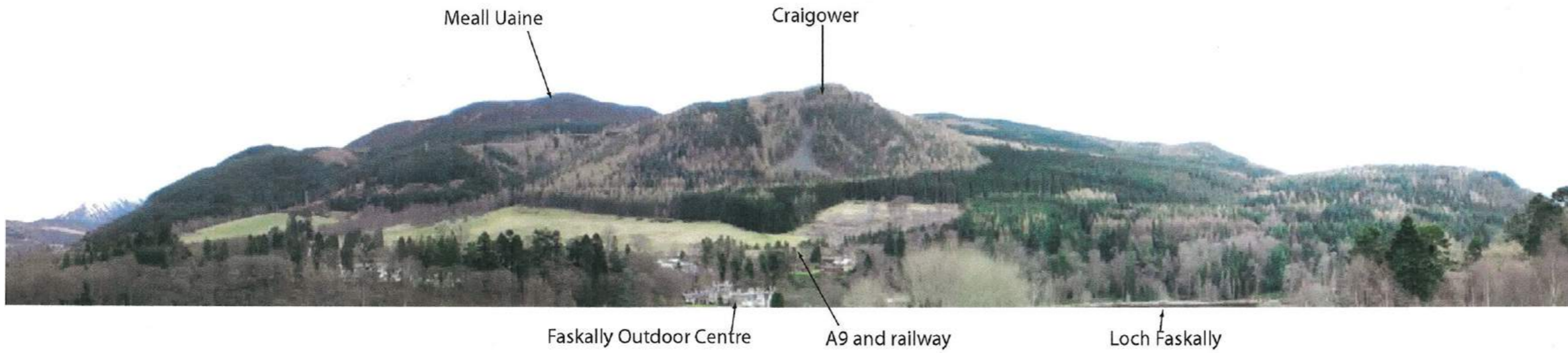


Tay Forest District Faskally

View: Clunie Power Station
Grid Ref: NN 291043 759835
Date: April 2009



Map 7.1 view 1 future habitats and management perspectives



Fell Key

| | |
|--|------------------------------|
| | Native Broadleaves |
| | Native woodland / open space |
| | Native shrubs |
| | Evergreen conifer |
| | Predominately Sitka spruce |
| | Predominately Scots pine |
| | Predominately Douglas fir |
| | Nature reserve |
| | Minimal intervention |
| | Continuous cover |
| | 40% tree cover / open space |
| | Predominately Norway spruce |
| | Neighbouring woodland |

Crown Copyright. All rights reserved.
Forestry Commission. Licence no. 1000025498. 2009

Viewpoint location
OS 1:50000 sheet No. 52

Tay Forest District Faskally

View: Clunie Power Station
Grid Ref: NN 291043 759835
Date: April 2009