


M4 - Analysis Map (Recreation)


Scale @ A3: 1:14,250
Date: 14/01/2025


Legend

 Garadhban Boundary

Visitor Zones

 Interactive zone - Buffer around trail

 Passive zone - Key views / backdrop from trail

 Welcome zone - Key arrival or destination point

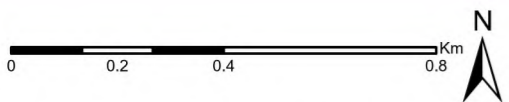
 Core Paths

 Rob Roy Way

 West Highland Way

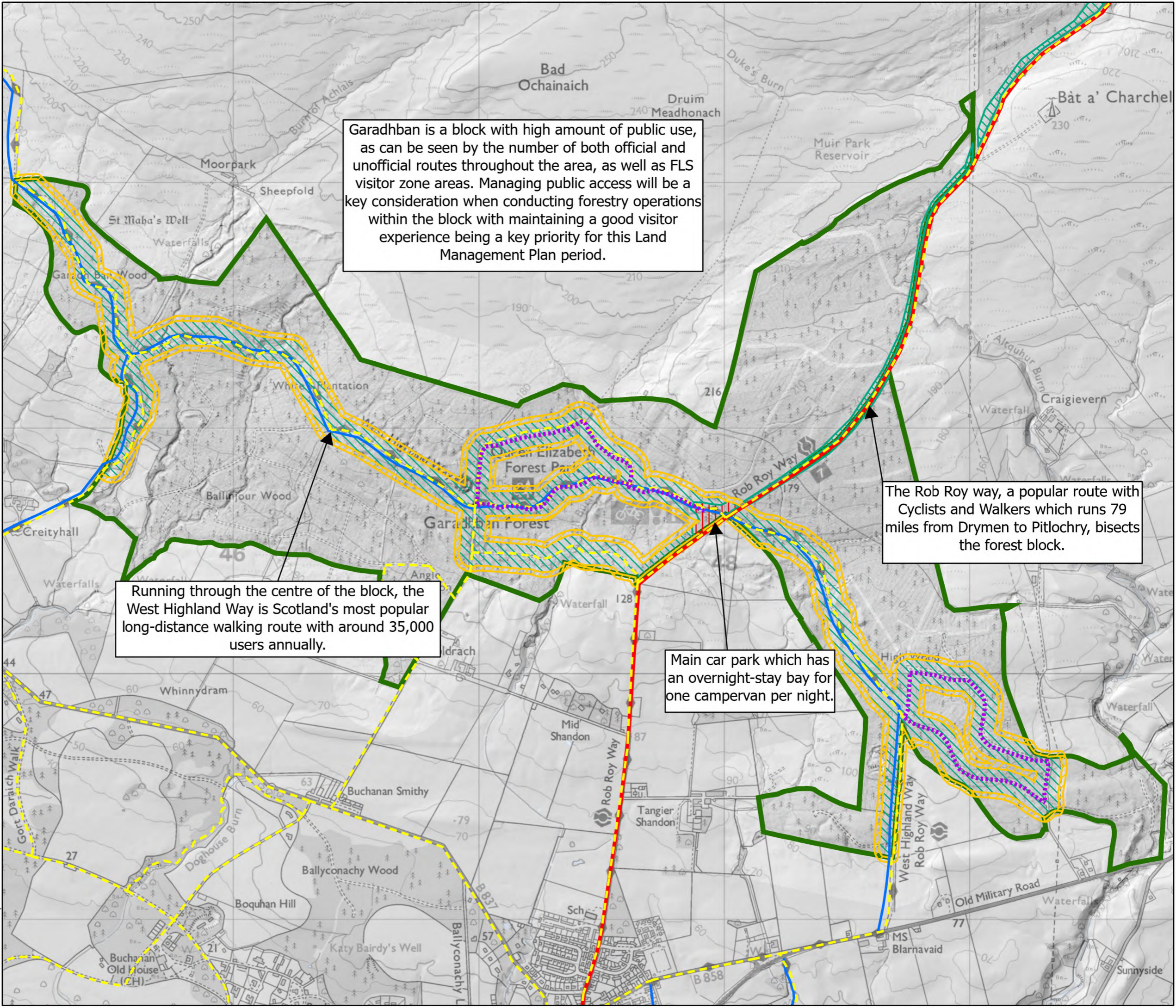
Multi User Trails

 Moderate



Reproduced by permission of Ordnance Survey on behalf of HMSO. © Crown copyright and database right [2025]. All rights reserved. Ordnance Survey Licence number AC0000820350. © Getmapping Plc and Bluesky International Limited 2025.

Declaration by FLS as an Operator. All timber arising from the FLS National Forests and Land represents a negligible risk under EUTR (No 995/210).



Garadhban is a block with high amount of public use, as can be seen by the number of both official and unofficial routes throughout the area, as well as FLS visitor zone areas. Managing public access will be a key consideration when conducting forestry operations within the block with maintaining a good visitor experience being a key priority for this Land Management Plan period.

The Rob Roy way, a popular route with Cyclists and Walkers which runs 79 miles from Drymen to Pitlochry, bisects the forest block.

Running through the centre of the block, the West Highland Way is Scotland's most popular long-distance walking route with around 35,000 users annually.

Main car park which has an overnight-stay bay for one campervan per night.