

Moray & Aberdeenshire Forest District
Bennachie

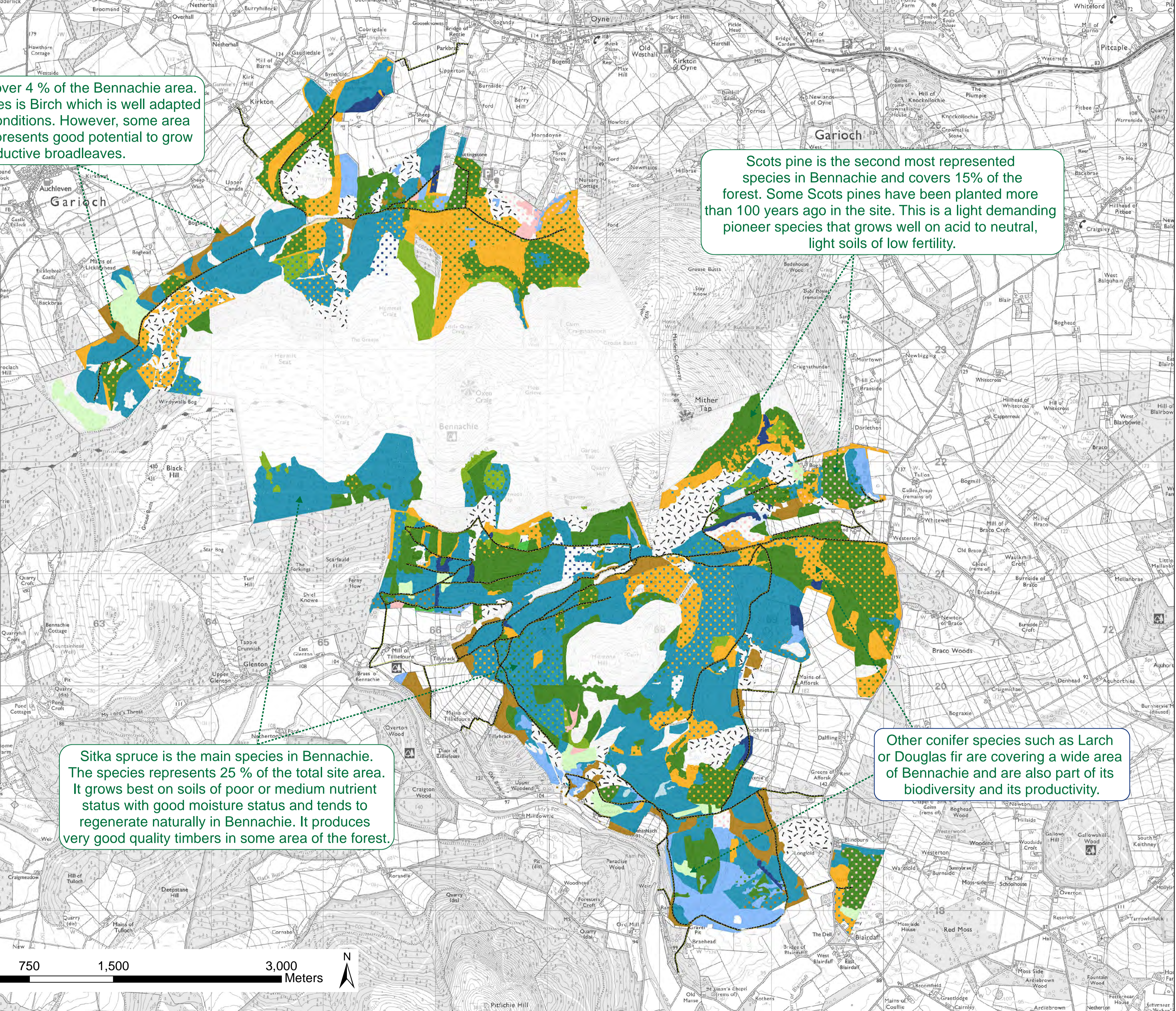
Current species Map

Date: January 2017
Scale: 1:18,000 at A1
O.S. Grid Ref NJ 670217

Broadleaves cover 4 % of the Bennachie area. The main species is Birch which is well adapted to poor soils conditions. However, some area in Bennachie presents good potential to grow productive broadleaves.

Scots pine is the second most represented species in Bennachie and covers 15% of the forest. Some Scots pines have been planted more than 100 years ago in the site. This is a light demanding pioneer species that grows well on acid to neutral, light soils of low fertility.

- Roads
- Birch
- Birch/Conifers
- Douglas fir
- Douglas fir/Broadleaves
- Felled
- Larch
- Larch/Broadleaves
- Larch/Lodgepole pine
- Larch/Norway spruce
- Larch/Scots pines
- Larch/Sitka Spruce
- Lodgepole pine
- Lodge pine/Broadleaves
- Lodgepole pine/Larch
- Lodgepole pine/Norway spruce
- Lodgepole pine/Sitka spruce
- Mixed broadleaves
- Mixed conifers
- Mixed conifers/mixed broadleaves
- Norway spruce
- Norway spruce/Birch
- Norway spruce/Larch
- Norway spruce/Scots pine
- Open
- Open/Birch
- Open/Mixed broadleaves
- Open/Mixed conifers
- Open/Sitka spruce
- Scots pine
- Scots pine/Birch
- Scots pine/Larch
- Scots pine/Lodgepole pine
- Scots pine/Mixed broadleaves
- Scots pine/Sitka spruce
- Sitka spruce
- Sitka spruce/Douglas fir
- Sitka spruce/Larch
- Sitka spruce/Lodgepole pine
- Sitka spruce/Mixed broadleaves
- Sitka spruce/Norway spruce
- Sitka spruce/Scots pine
- Western hemlock
- Western hemlock/Norway spruce



Sitka spruce is the main species in Bennachie. The species represents 25 % of the total site area. It grows best on soils of poor or medium nutrient status with good moisture status and tends to regenerate naturally in Bennachie. It produces very good quality timbers in some area of the forest.

Other conifer species such as Larch or Douglas fir are covering a wide area of Bennachie and are also part of its biodiversity and its productivity.