



Glenwhan - Thinning map

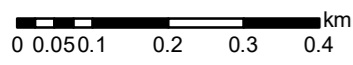
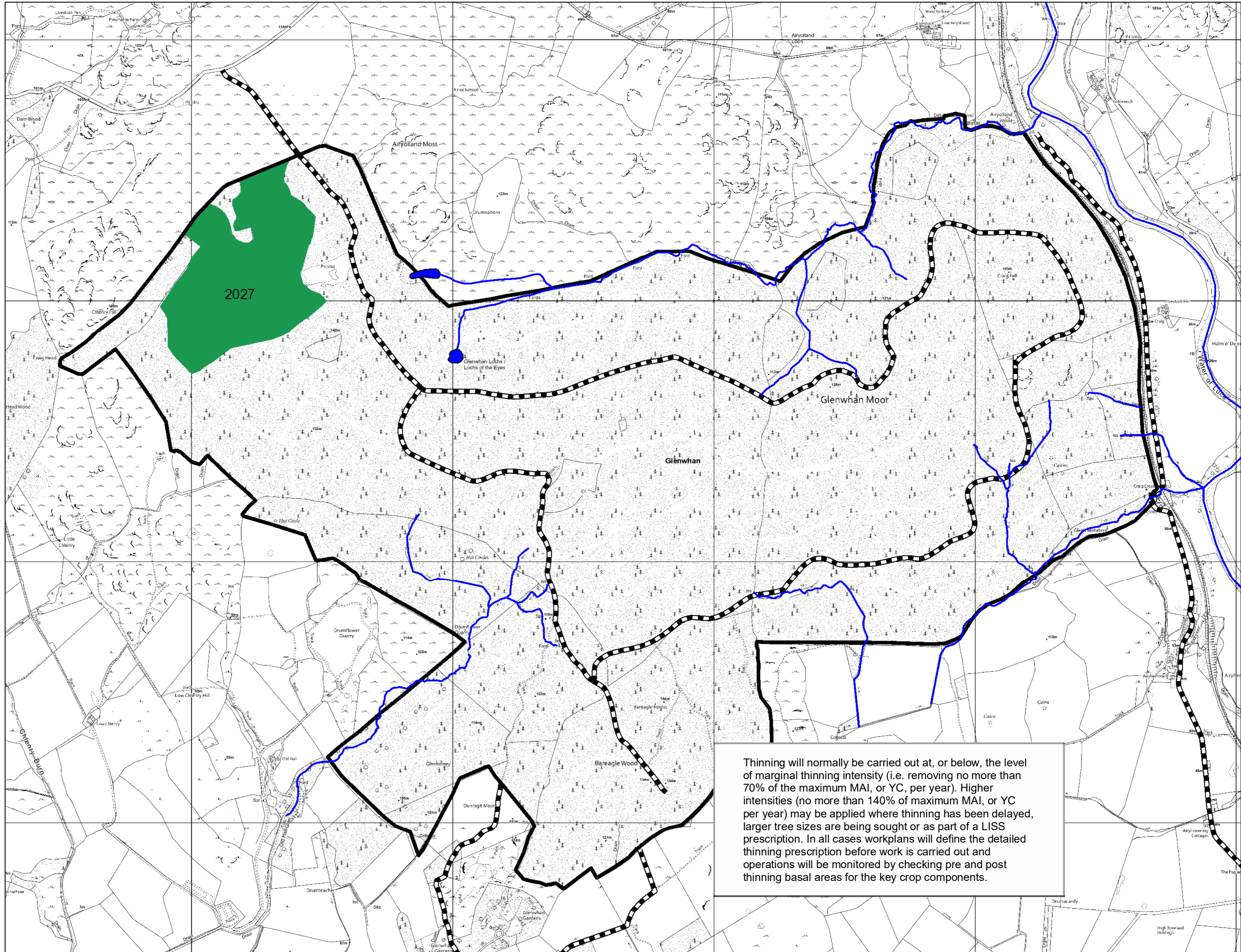
Author: Stephen Stables

Scale @ A2: 1:10,000

Date: 26/05/2021

Legend

- Open Water
- Watercourses
- Blocks
- Forest Roads**
- Forest Roads
- Operational Thinning Coupes**
- No
- Yes



Reproduced by permission of Ordnance Survey on behalf of HMSO.
 © Crown copyright and database right 2021. All rights reserved.
 Ordnance Survey Licence number 100024925.
 © Getmapping Plc and Bluesky International Limited 2021.

Thinning will normally be carried out at, or below, the level of marginal thinning intensity (i.e. removing no more than 70% of the maximum MAI, or YC, per year). Higher intensities (no more than 140% of maximum MAI, or YC per year) may be applied where thinning has been delayed, larger tree sizes are being sought or as part of a LISS prescription. In all cases workplans will define the detailed thinning prescription before work is carried out and operations will be monitored by checking pre and post thinning basal areas for the key crop components.

Scotland's national forests and land are responsibly managed to the UK Woodland Assurance Standard.

