

SELM MUIR LMP NGR: NT 088 649

Map 5. Forest habitat network potential





Author: Central Region Planning Team

Scale @ A3: 1:15,000

Date: 06/01/2022

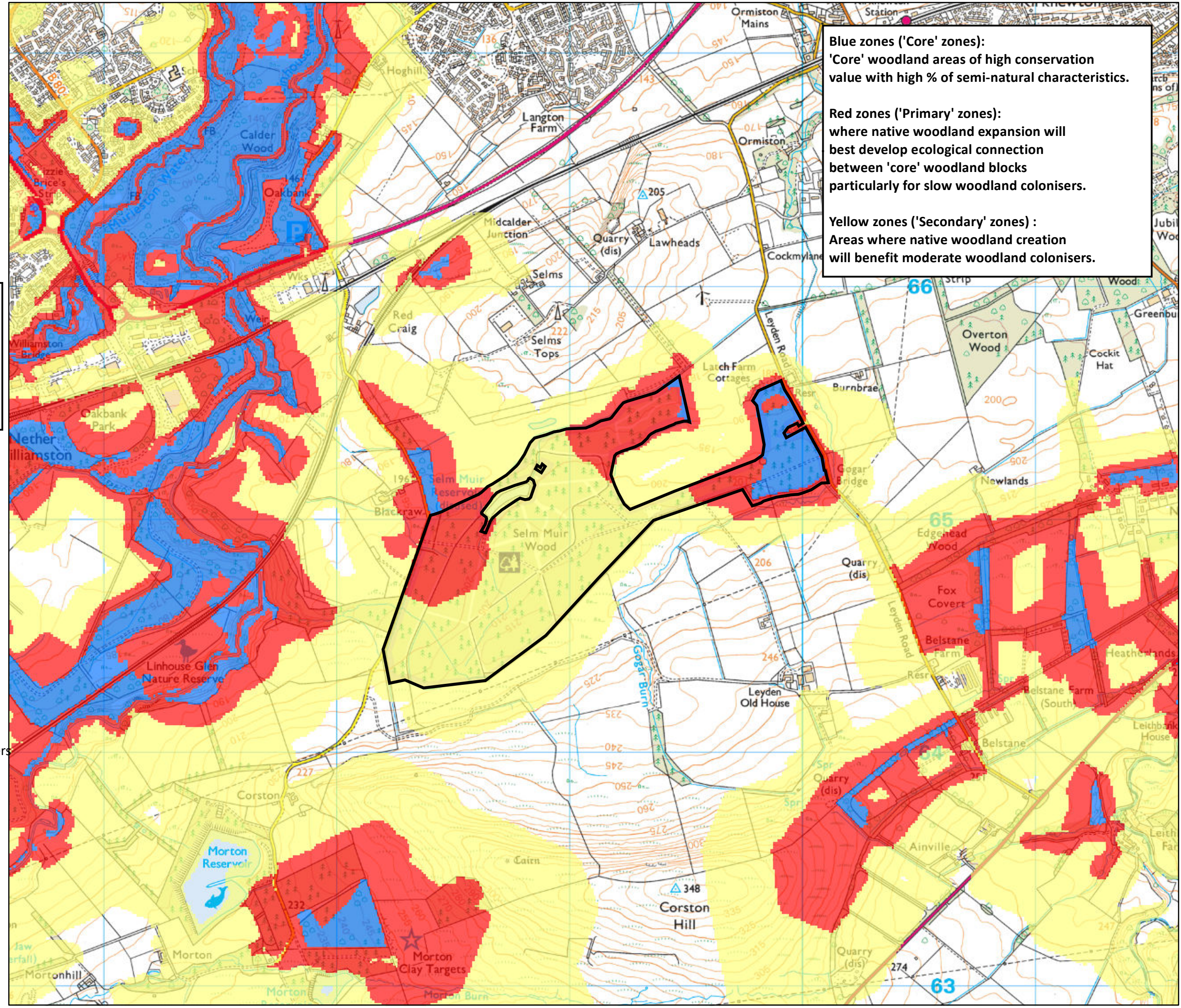
Forest Habitat Network:
zones developed to target
most ecologically beneficial
areas for native woodland
expansion & grant funding.

Legend

-  Selm muir Forest Boundary
-  Core Native Woodland
-  Primary Zone
-  Secondary Zone



Reproduced by permission of Ordnance Survey on behalf of HMSO.
© Crown copyright and database right [2022]. All rights reserved.
Ordnance Survey Licence number [100021242].
© Getmapping Plc and Bluesky International Limited 2022.



Blue zones ('Core' zones):
'Core' woodland areas of high conservation value with high % of semi-natural characteristics.

Red zones ('Primary' zones):
where native woodland expansion will best develop ecological connection between 'core' woodland blocks particularly for slow woodland colonisers.

Yellow zones ('Secondary' zones):
Areas where native woodland creation will benefit moderate woodland colonisers.