



Have your say

East Loch Shiel

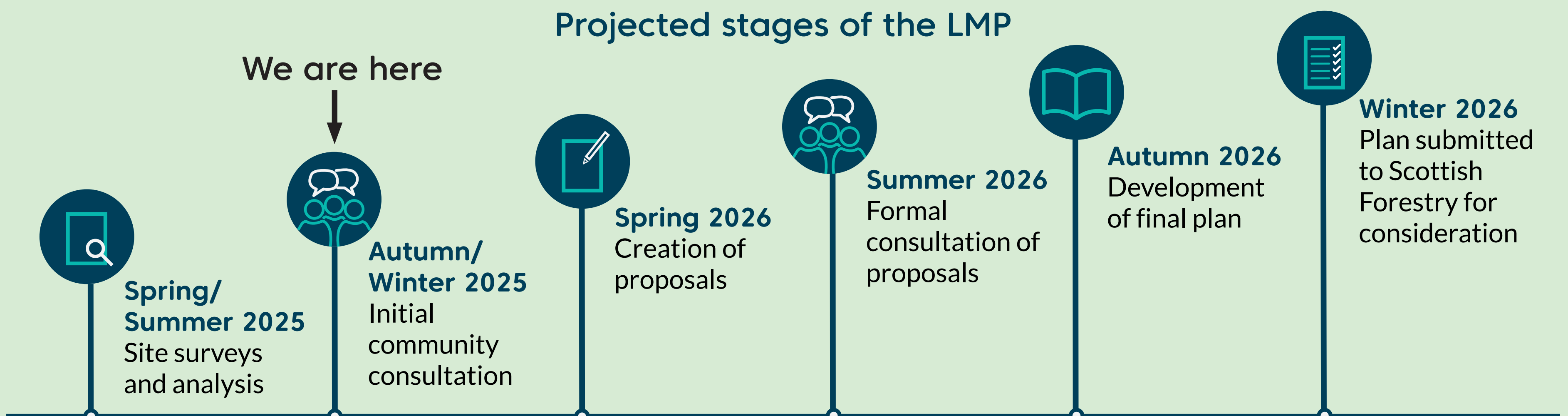
What is today's consultation about?

Welcome to this exhibition looking at the long term vision for the forest blocks known collectively as East Loch Shiel. The purpose of this event is to provide you with information, facilitate discussion and to let you know how you can comment on the Land Management Plan (LMP) currently being developed. In addition to these exhibition boards, you can find more information on our website: forestryandland.gov.scot

What is the purpose of a Land Management Plan?

LMP's describe how Forestry and Land Scotland intends to manage the landscape over a period of 10 years, and also set out our longer term objectives. When we develop an LMP, we gather views from a range of different stakeholders, most particularly from local communities. This helps us to develop the plan while balancing competing objectives.

Projected stages of the LMP



How to comment

We are in the scoping stage of this plan and want to hear your views. Please use one of the following methods to share your opinions or to find out more as the plan is in development.

- 0300 067 6650
- enquiries.west@forestryandland.gov.scot
- Forestry and Land Scotland, Torlundy, Fort William, PH33 6SW
- forestryandland.gov.scot/eastlochshiel

Scan QR Code here



Forestry and Land Scotland's forests are independently certified as being responsibly managed. We're regularly audited against the UK Woodland Assurance Standard - the standard endorsed in the UK by the international Forest Stewardship Council® and the Programme for the Endorsement of Forest Certification.

Keeping in touch with our stakeholders and understanding their views is important to us and an important part of the standard. We welcome all comments on these proposals.





The site and surrounding area

Location

The East Loch Shiel Land Management Plan (LMP) consists of Callop and Drumfern, Loch Shiel and Achanellan forests, lying in the heart of the Scottish rainforest zone. The LMP area occupies just over 3,780ha, of which 1,920ha is forested and 1,859ha is open.

Existing conditions

The LMP area is affected by multiple environmental designations of National and European importance. Also of note are two Scheduled Monuments: Corrantee Lead Mines in Achanellan Forest and Rubha an Fhaing Dhuibh, a fort/settlement on the loch shore in Loch Shiel Forest.

Large areas of crop are affected by ancient semi-natural woodland (ASNW) designations including plantations on ancient woodland sites (PAWS). The existing native woodland comprises of upland birchwood and oakwood, wet woodland and native pinewood which are home to invertebrates. Most of the open land is classified as priority habitat.

Substantial proportions of non-native conifer crop are economically mature, with large areas lacking operational access. Second rotation spruce crops have been impacted by poor soils. Poor growth rates are also attributed to some areas of deep peat. Watercourses from all but the most eastern areas of Drumfern drain into Loch Shiel - which is home to protected species such as black-throated diver, otter and salmonid species.



Scheduled Monument: Corrantee Lead Mine

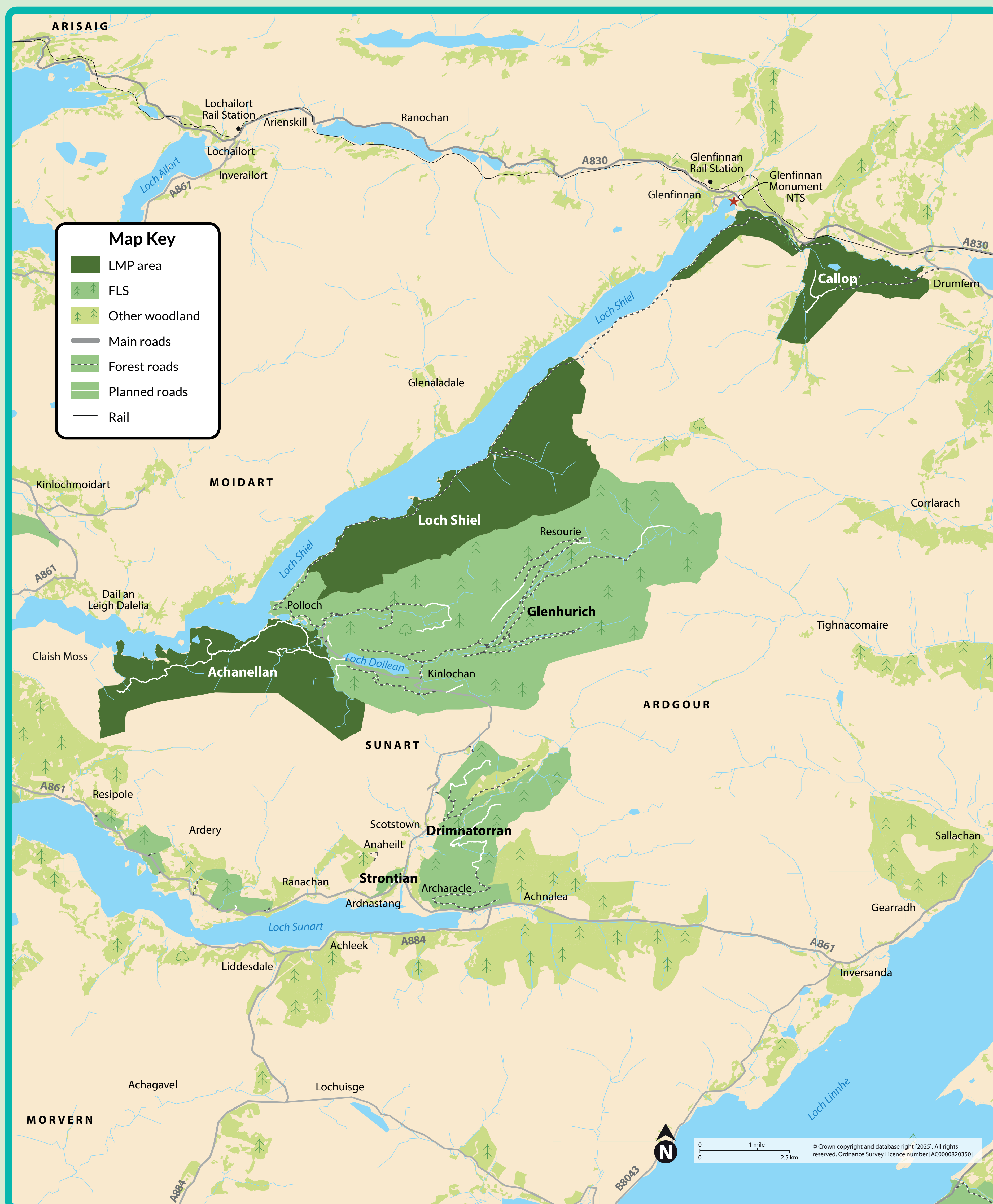


Regenerating PAWS



Open habitats and lochans

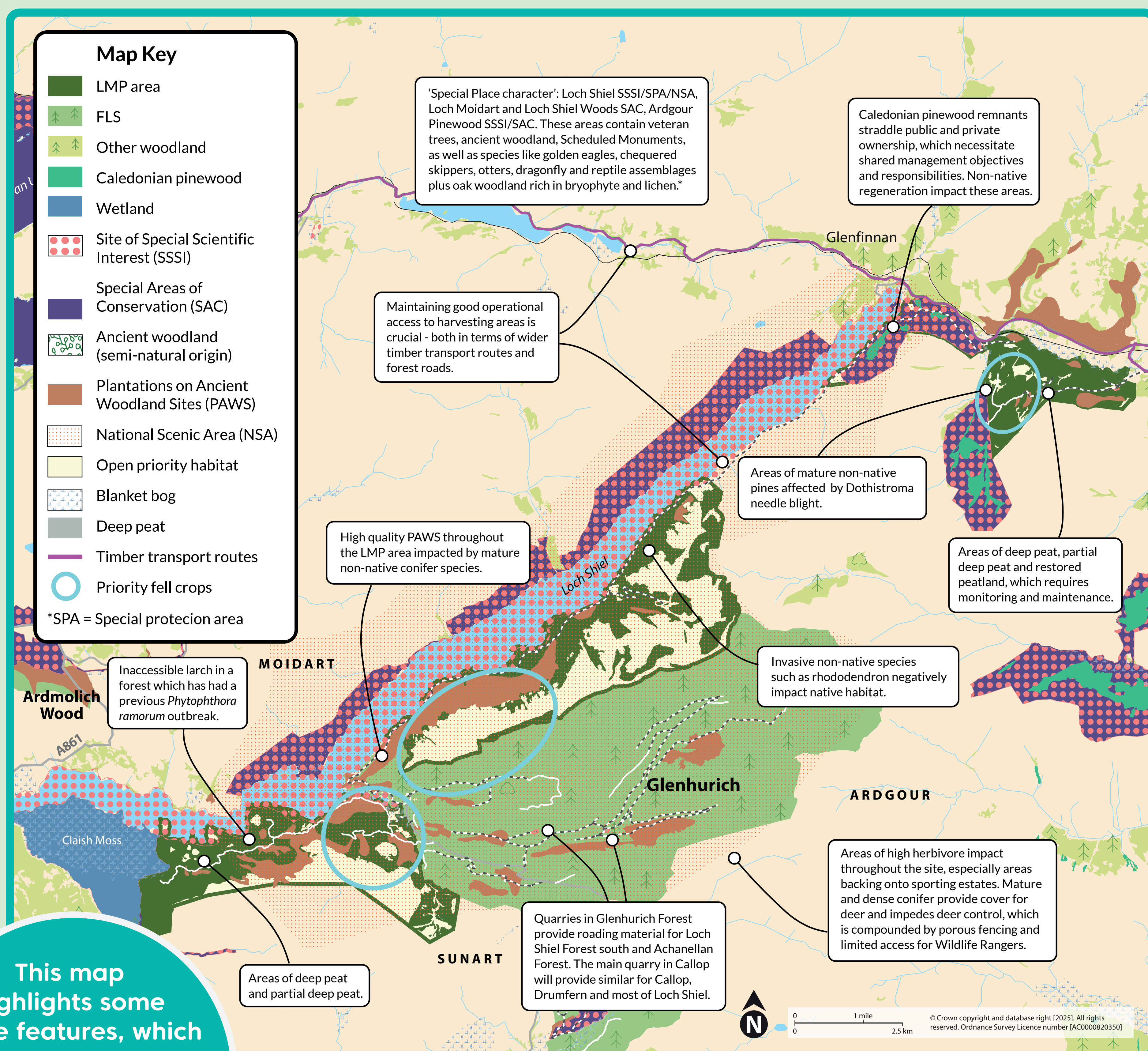
Context





Constraints and opportunities

- Extensive areas of designated habitat and iconic landscape.
- Extensive areas of high quality PAWS.
- Impact of high deer numbers on native woodland habitat, peatland habitats and woodland regeneration.
- Porous strategic fencing.
- Reliance on a single point of access to most of the LMP.
- Substantial areas of economically mature crops lacking operational access in environmentally sensitive areas.
- Identifying phased felling whilst considering the non-native seeding threats on adjacent regenerating native woodland sites.
- Afforested deep peat areas that connect with nationally important peatland.
- Multiple watercourses.



This map highlights some of the features, which may provide us with opportunities, along with other features which may act as constraints



Constraints



Examples
of some of
the key
constraints
we need to
address



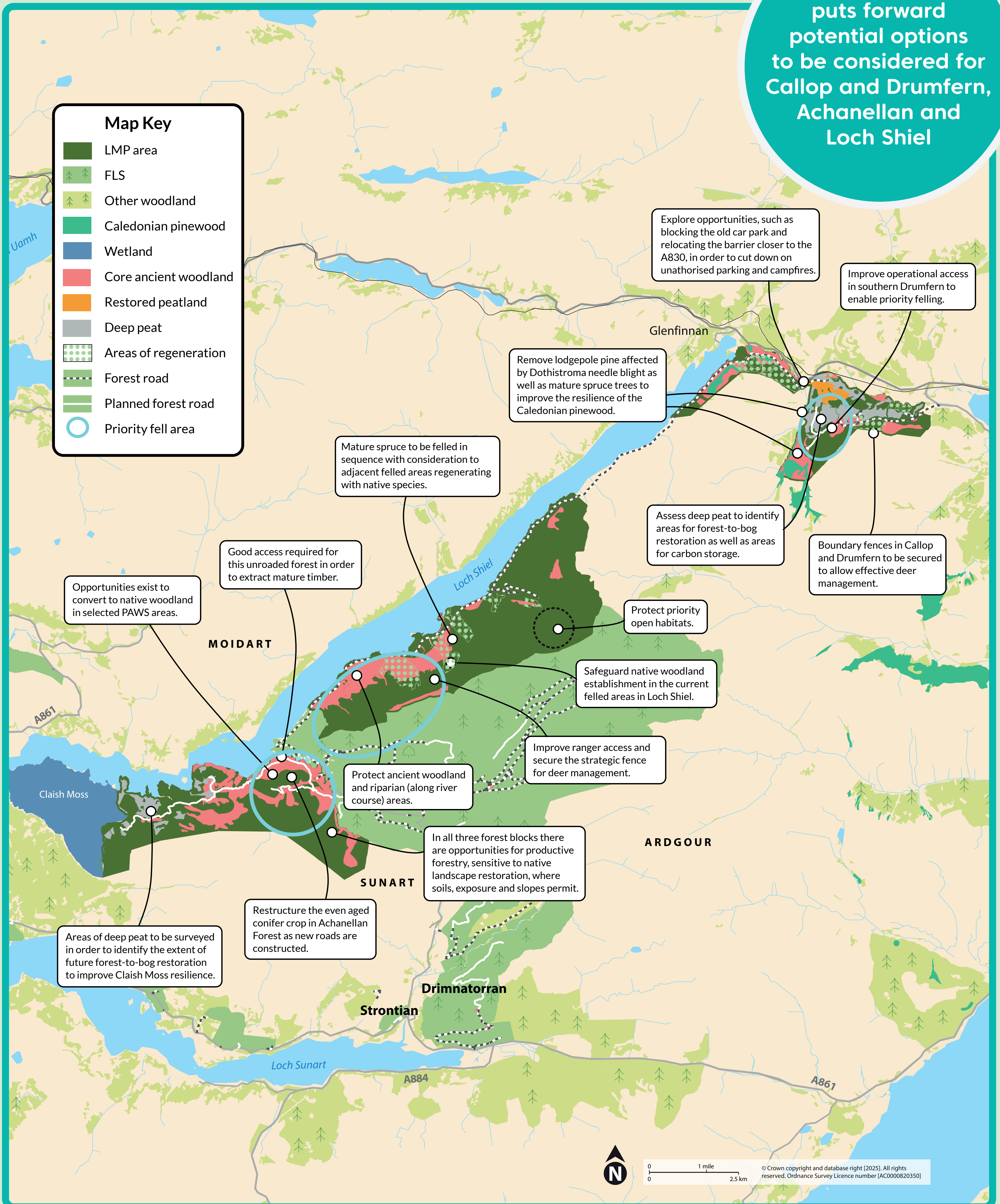
Special place





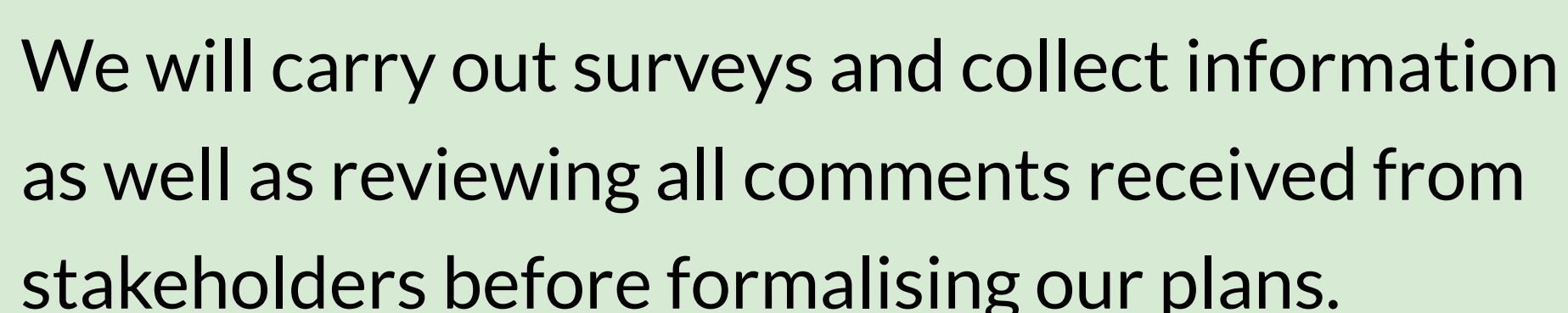
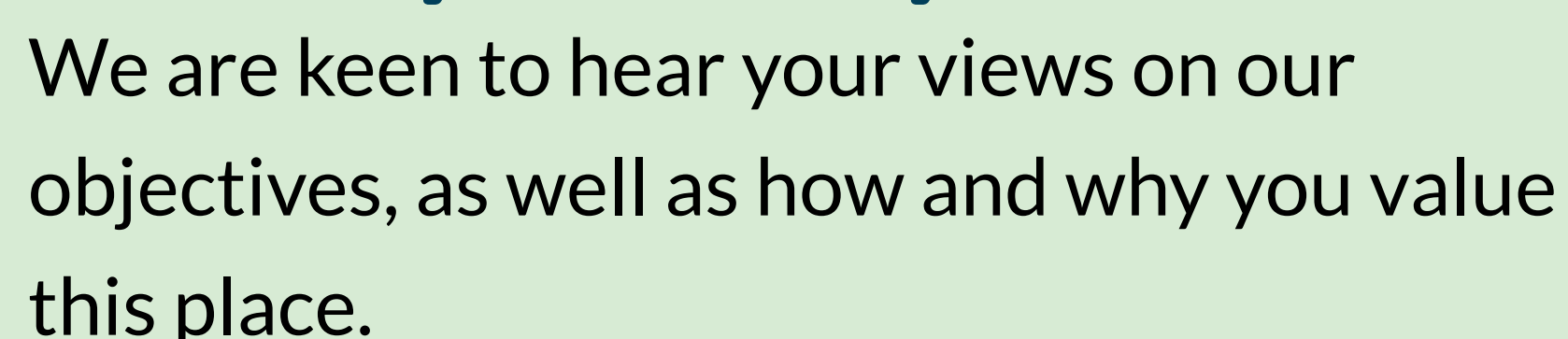
Concept

This map
puts forward
potential options
to be considered for
Callop and Drumfern,
Achanellan and
Loch Shiel



- To identify and survey viable operational access in Achanellan Forest and southern Drumfern with consideration to environmental sensitivities.
- To remove non-native spruce crops from the Ardgour pinewoods designation in Drumfern Forest.
- To improve tree health through the planned removal of infected lodgepole pines in Drumfern Forest and identify the phased removal of larch crops.
- To initiate the restructuring of Achenellan Forest and commence PAWS restoration in the eastern extent.
- To assess the afforested deep peats of Drumfern and western Achanellan for forest-to-bog restoration, carbon storage land uses and improved resilience of adjacent nationally and globally important peatland habitats.
- To address the threats to operational access and native pinewood resilience resulting from antisocial behaviour in Callop.

- To improve biodiversity resilience and identify programmes of work which protects ancient woodland features, including riparian habitat, which will improve conditions for the further development of Scottish rainforest associated lower plants and salmonid spawning habitat.
- To identify opportunities for productive woodland with consideration to the spirit of landscape scale native woodland and other native habitat restoration.
- To identify private water supply abstraction points and associated catchments that affect the LMP area and forest operations.
- To retain FSC and PEFC sustainable forestry certification under the UK Woodland Assurance Standard.
- To improve resilience against the negative impact of high deer numbers, enabled through effective strategic fencing; taking full control of deer management, lowering deer numbers to sustainable levels through improved resourcing and Ranger access.



- What is your connection to this place?
- Why is this place important to you?
- Is there a significant feature or issues we should be aware of?
- Do you have a vision of what this forest and landscape should look like in the future?