



Moray & Aberdeenshire
Forest District
Culbin

Map 6 Thinning

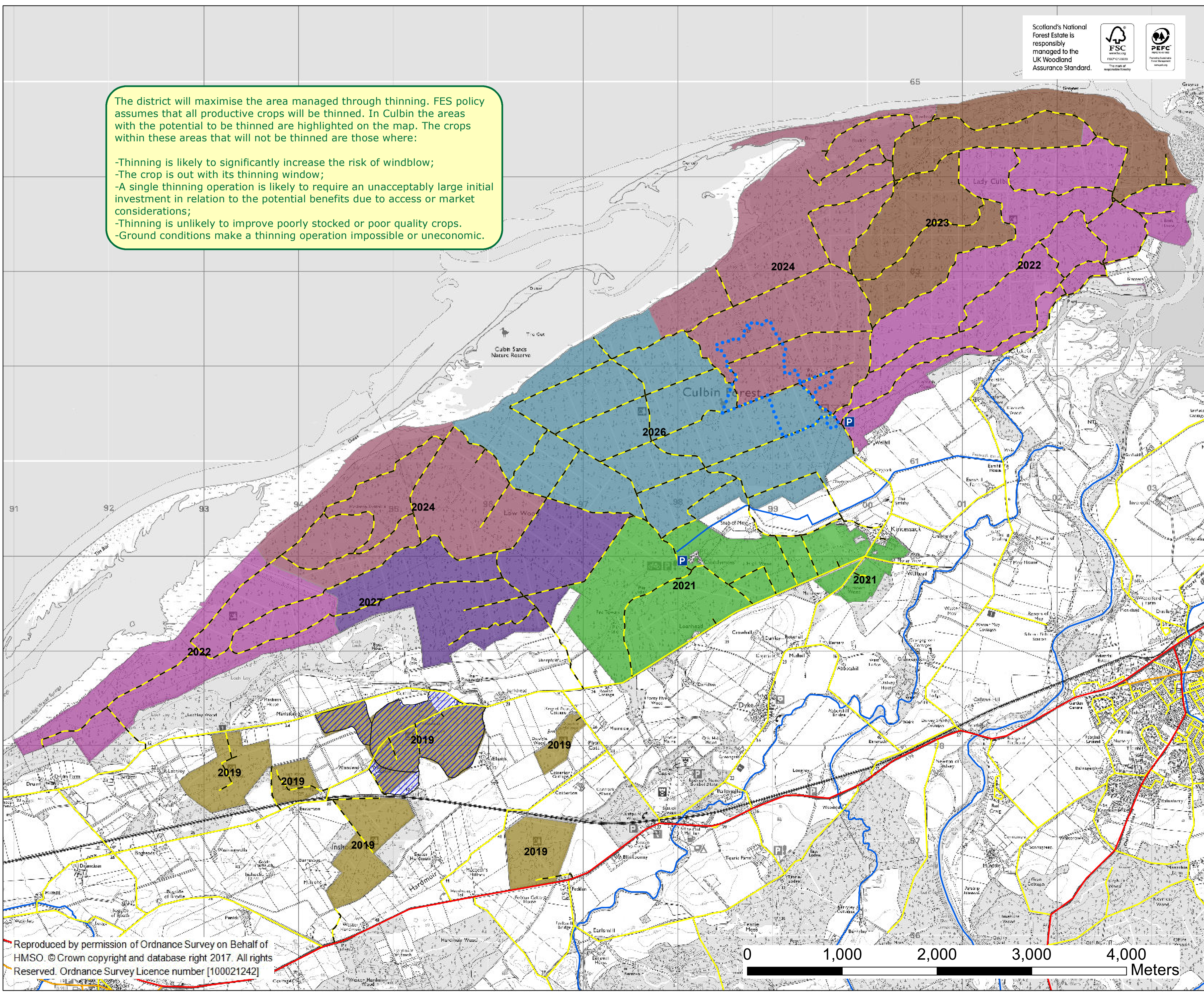
O.S. Grid Ref NH 982 599
Date June 2017
Scale 1:20,000 @ A1

The district will maximise the area managed through thinning. FES policy assumes that all productive crops will be thinned. In Culbin the areas with the potential to be thinned are highlighted on the map. The crops within these areas that will not be thinned are those where:

- Thinning is likely to significantly increase the risk of windblow;
- The crop is out with its thinning window;
- A single thinning operation is likely to require an unacceptably large initial investment in relation to the potential benefits due to access or market considerations;
- Thinning is unlikely to improve poorly stocked or poor quality crops.
- Ground conditions make a thinning operation impossible or uneconomic.

Next thinning year

- 2019
- 2021
- 2022
- 2023
- 2024
- 2026
- 2027



Reproduced by permission of Ordnance Survey on Behalf of HMSO. © Crown copyright and database right 2017. All rights Reserved. Ordnance Survey Licence number [100021242]