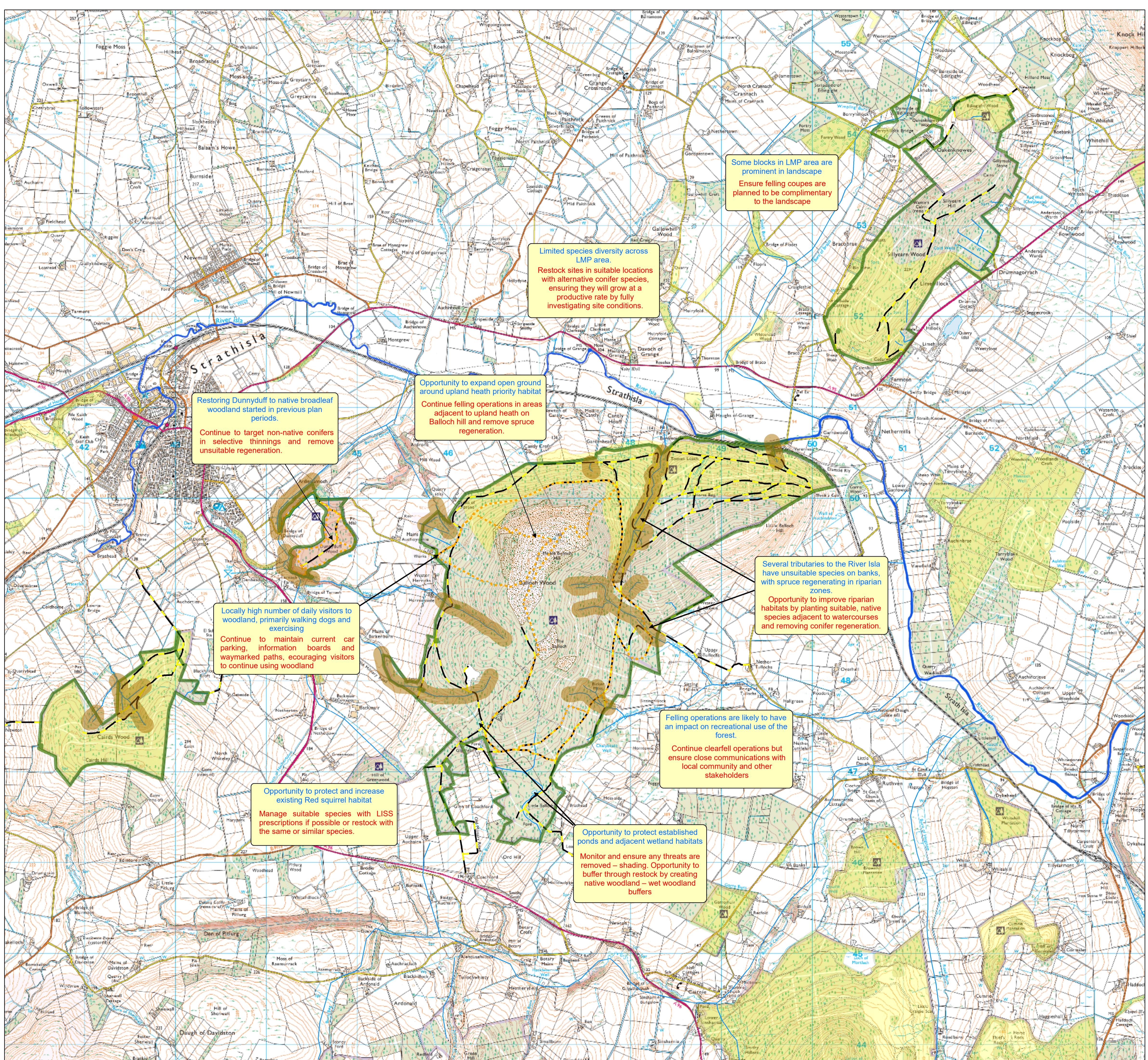


# Keith Woods

Map 4: Opportunities, Constraints and Concept  
 Scale @ A1: 1:20,000  
 Date: Dec 2020

## Legend

- Keith Woods LMP
- Recreation Routes
- Forest Roads
- Upland Heath
- Watercourses
- Potential Riparian Improvement Zones
- Ancient (of semi-natural origin)
- Long-Established (of plantation origin)



Some blocks in LMP area are prominent in landscape. Ensure felling coupes are planned to be complimentary to the landscape.

Limited species diversity across LMP area. Restock sites in suitable locations with alternative conifer species, ensuring they will grow at a productive rate by fully investigating site conditions.

Restoring Dunnyduff to native broadleaf woodland started in previous plan periods. Continue to target non-native conifers in selective thinnings and remove unsuitable regeneration.

Opportunity to expand open ground around upland heath priority habitat. Continue felling operations in areas adjacent to upland heath on Balloch hill and remove spruce regeneration.

Locally high number of daily visitors to woodland, primarily walking dogs and exercising. Continue to maintain current car parking, information boards and waymarked paths, encouraging visitors to continue using woodland.

Several tributaries to the River Isla have unsuitable species on banks, with spruce regenerating in riparian zones. Opportunity to improve riparian habitats by planting suitable, native species adjacent to watercourses and removing conifer regeneration.

Felling operations are likely to have an impact on recreational use of the forest. Continue clearfell operations but ensure close communications with local community and other stakeholders.

Opportunity to protect and increase existing Red squirrel habitat. Manage suitable species with LISS prescriptions if possible or restock with the same or similar species.

Opportunity to protect established ponds and adjacent wetland habitats. Monitor and ensure any threats are removed – shading. Opportunity to buffer through restock by creating native woodland – wet woodland buffers.

0 0.25 0.5 1 1.5 2 2.5 Km  
 © Crown Copyright and database right 2021.  
 Ordnance Survey Licence number 100021242.  
 © Getmapping Plc and Bluesky International Limited 2021.

Scotland's National Forest Estate is responsibly managed to the UK Woodland Assurance Standard.



FSC  
www.fsc.org  
FSC® C123223  
The mark of responsible forestry



PEFC  
PEFC® 16-40-1002  
Promoting Sustainable Forest Management  
www.pefc.org