

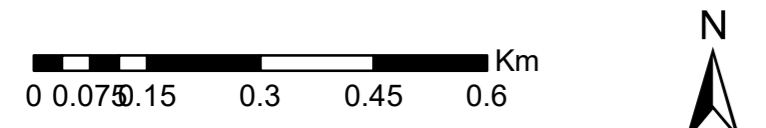
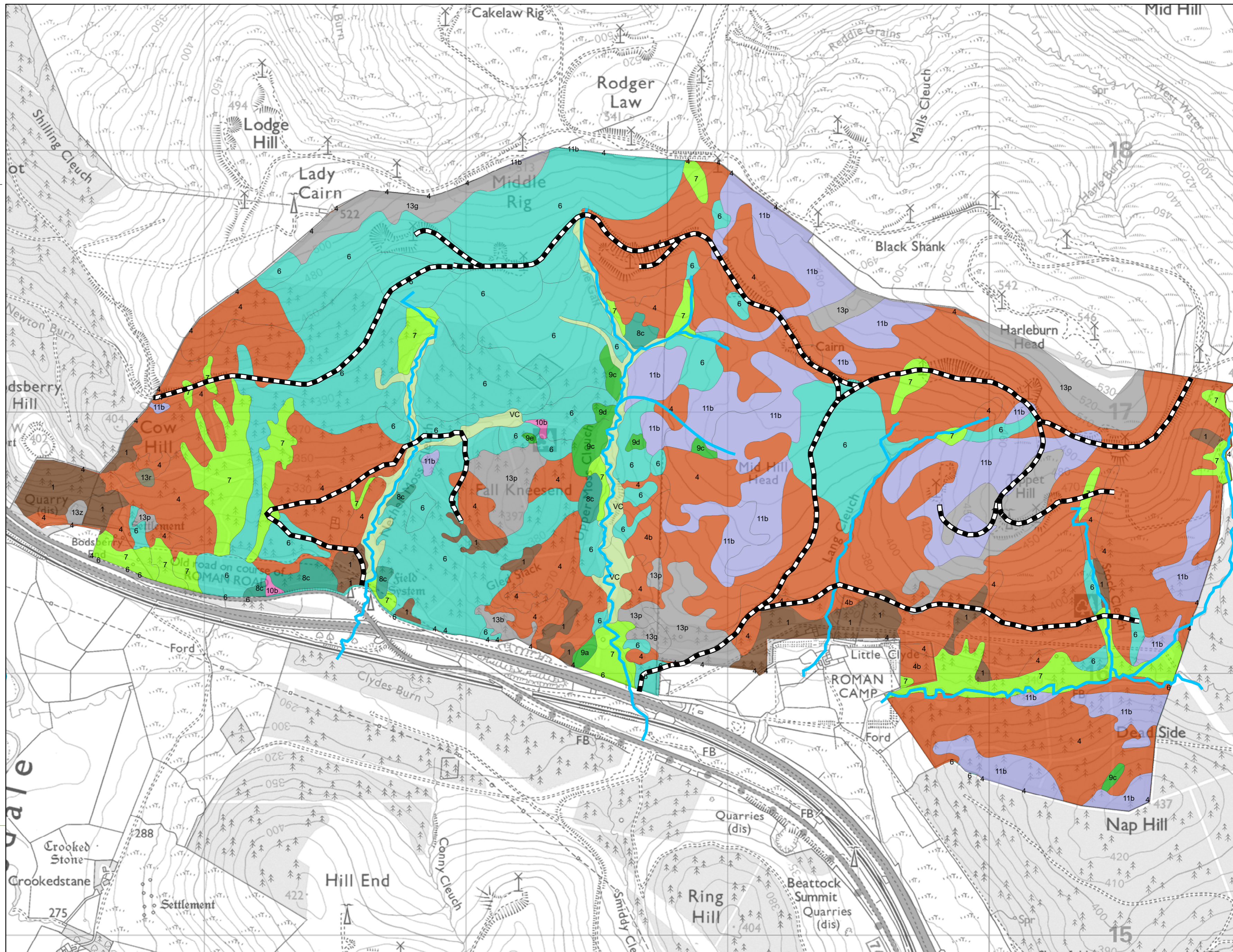
Little Clyde LMP 2024-2034  
Map 8: Soils

Author: David Darroch

Scale @ A2: 1:10,000

Date: 25/03/2024

Legend			
	Not Surveyed		
	1 [Typical Brown Earth]		8a [Phragmites (or Fen) Bog]
	14 [Basic Brown Earth]		8b [Juncus articulatus or acutiflorus Bog]
	1u [Upland Brown Earth]		8c [Juncus effusus Bog]
	1z [Podzolic Brown Earth]		8d [Carex Bog]
	2s [Mining Spoil, Stony or Coarse Textured]		9a [Molinia, Myrica, Salix Bog]
	2m [Mining Spoil, Shaly or Fine Textured]		9b [Tussocky Molinia Bog, Molinia, Calluna Bog]
	3 [Typical Podzol]		9c [Tussocky Molinia, Eriophorum vaginatum Bog]
	3m [Hardpan Podzol]		9d [Non-Tussocky Molinia, Eriophorum vaginatum, Trichophorum Bog]
	4 [Typical Ironpan Soil]		9e [Trichophorum, Calluna, Eriophorum, Molinia Bog (Weakly Flushed)]
	4b [Intergrade Ironpan Soil]		10a [Lowland Sphagnum Bog]
	5 [Typical Ground-Water Gley]		10b [Upland Sphagnum Bog]
	5b [Brown Ground-Water Gley]		11a [Calluna Blanket Bog]
	6 [Typical Peaty Surface-Water Gley]		11b [Calluna, Eriophorum vaginatum Blanket Bog]
	6z [Podzolic Peaty Surface-Water Gley]		11c [Trichophorum, Calluna Blanket Bog]
	7 [Typical Surface-Water Gley]		11d [Eriophorum Blanket Bog]
	7z [Podzolic Surface-Water Gley]		12a [Rendzina]
	7b [Brown Surface-Water Gley]		12b [Calcareous Brown Earth]
			12t [Argillic Brown Earth]
			13b [Brown Ranker]
			13g [Gley Ranker]
			13p [Peaty Ranker]
			13z [Podzolic Ranker]
			13r [Rock]
			13s [Scree]
			13c [Ranker Complex]
			14 [Shallow Hagged Eroded Bog]
			14h [Deeply Hagged Eroded Bog]
			14w [Pooled Eroded Bog]
			15s [Shingle]
			15d [Dunes]
			15e [Sand with Deep Water-Table (or Excessively Drained Sand)]
			15i [Sand with Moderately Deep Water-Table]
			15g [Sand with Shallow Water-Table]
			15w [Sand with Very Shallow Water-Table]
			VC [Valley Complex]



Reproduced by permission of Ordnance Survey on behalf of HMSO. © Crown copyright and database right [2024]. All rights reserved. Ordnance Survey Licence number [100021242]. © Getmapping Plc and Bluesky International Limited 2024.

Scotland's National Forest Estate is responsibly managed to the UK Woodland Assurance Standard.

