



Map 5 - Thinning

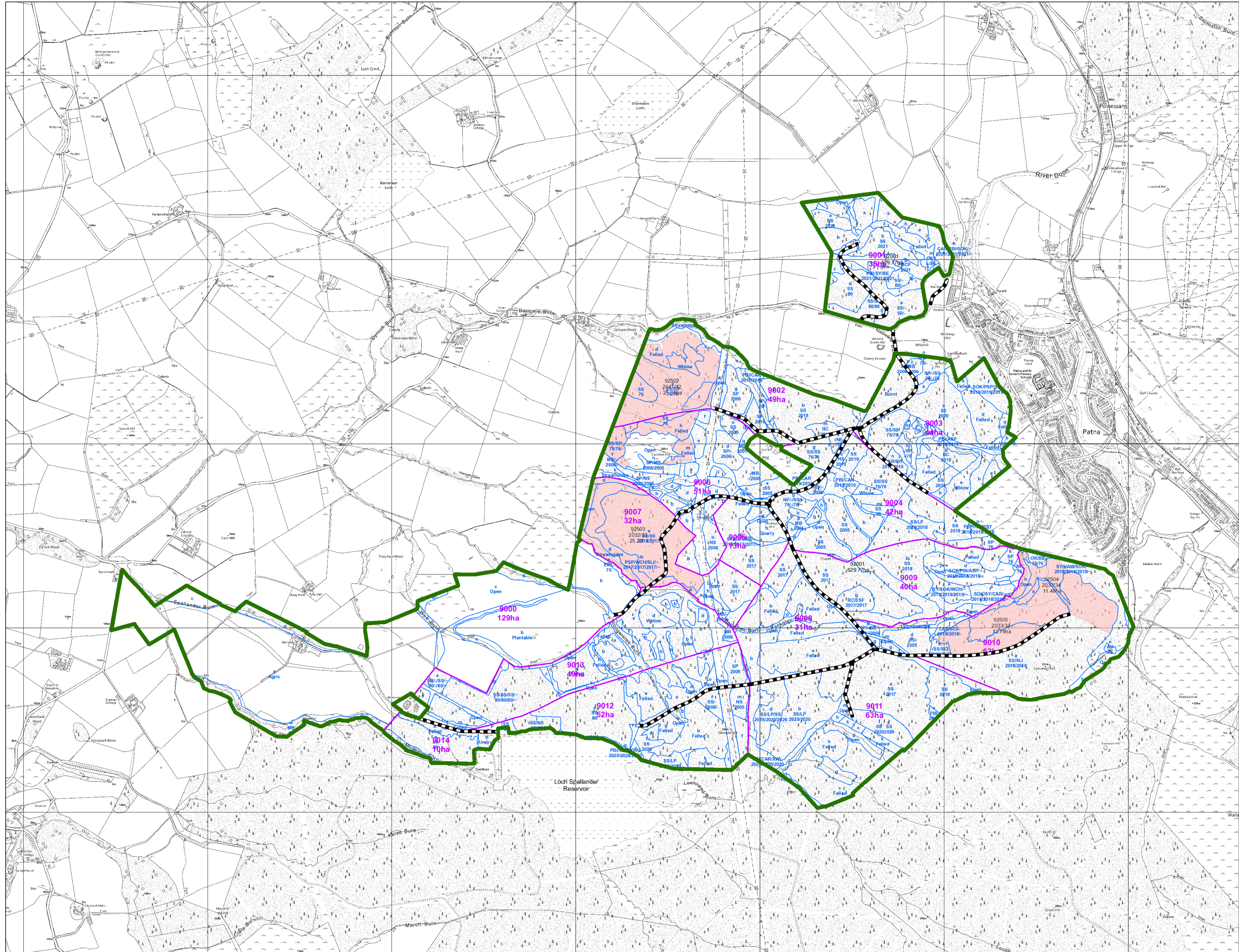
Author: Laura Green

Scale @ A1: 1:10,000

Date: 15/06/2022

Legend

- Blocks**
 - Blocks
- Forest Roads**
 - Forest Roads
- Compartments**
 - Compartments
- Sub-compartments**
 - Sub-compartments
- Scenario Thinning Coupes**
 - Pre 2023
 - 2023
 - 2024
 - 2025
 - 2026
 - 2027
 - 2028
 - 2029
 - 2030
 - After 2030
 - No Thinning



0 0.075 0.15 0.3 0.45 0.6 km



Reproduced by permission of Ordnance Survey on behalf of HMSO. © Crown copyright and database right 2022. All rights reserved. Ordnance Survey Licence number 100024925. © Getmapping Plc and Bluesky International Limited 2022.

Scotland's national forests and land are responsibly managed to the UK Woodland Assurance Standard.

