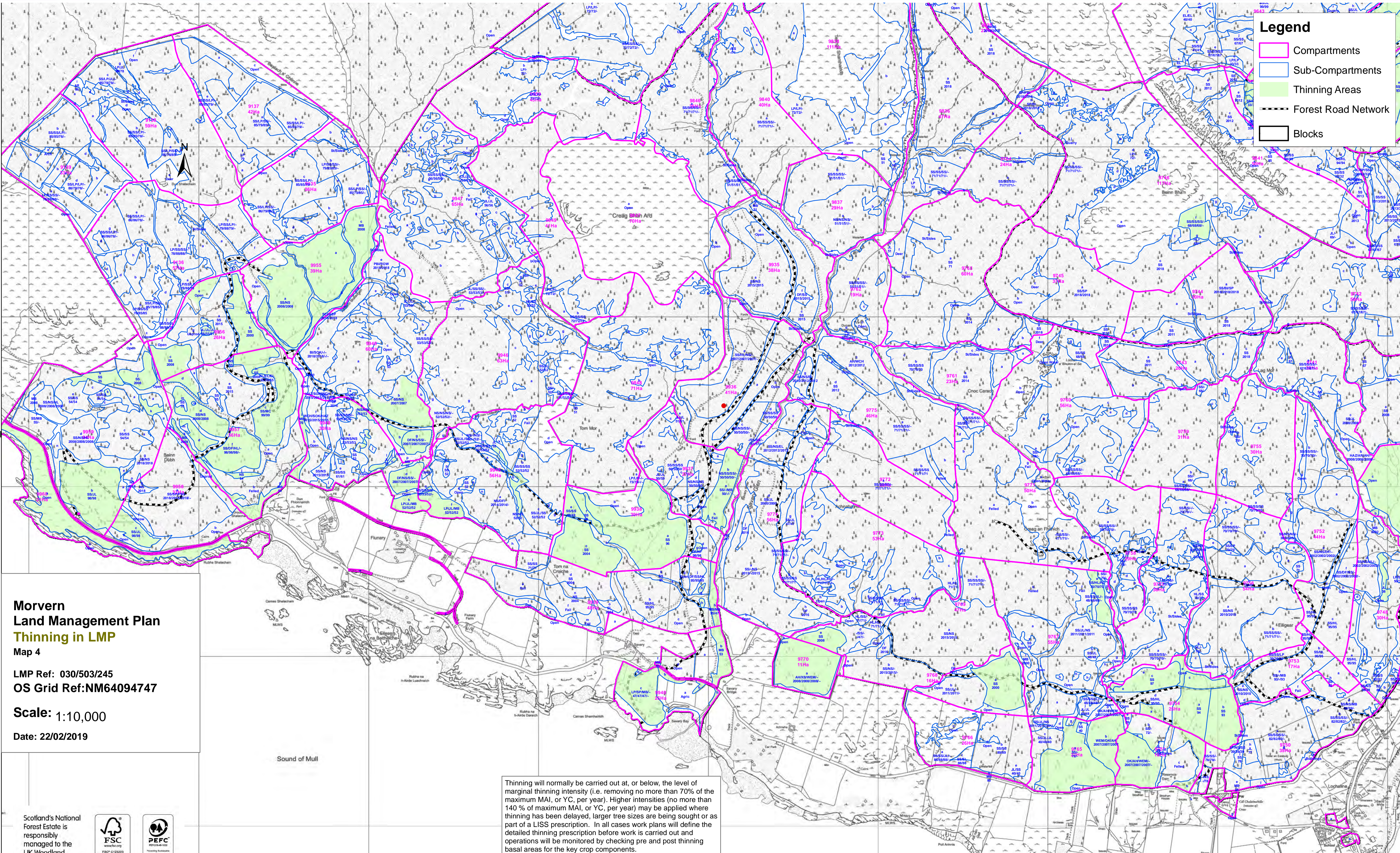


Legend

- Compartments
- Sub-Compartments
- Thinning Areas
- Forest Road Network
- Blocks



**Morvern
Land Management Plan
Thinning in LMP
Map 4**

LMP Ref: 030/503/245
OS Grid Ref: NM64094747

Scale: 1:10,000
Date: 22/02/2019

Thinning will normally be carried out at, or below, the level of marginal thinning intensity (i.e. removing no more than 70% of the maximum MAI, or YC, per year). Higher intensities (no more than 140% of maximum MAI, or YC, per year) may be applied where thinning has been delayed, larger tree sizes are being sought or as part of a LISS prescription. In all cases work plans will define the detailed thinning prescription before work is carried out and operations will be monitored by checking pre and post thinning basal areas for the key crop components.

