

Nature Restoration Fund Project Map - Glen Prosen

The Nature Restoration Fund Project in Glen Prosen aims to create 8.7ha of new riparian woodland creation and 155ha of natural regeneration in the River South Esk Special Area of Conservation.

Riparian planting within deer fenced enclosures along Burn of Louie and Burn of Kilbo - 5 enclosures in each polygon (0.25ha total)

Offset electric fence along existing stock fence to tie onto plantation deer fence.

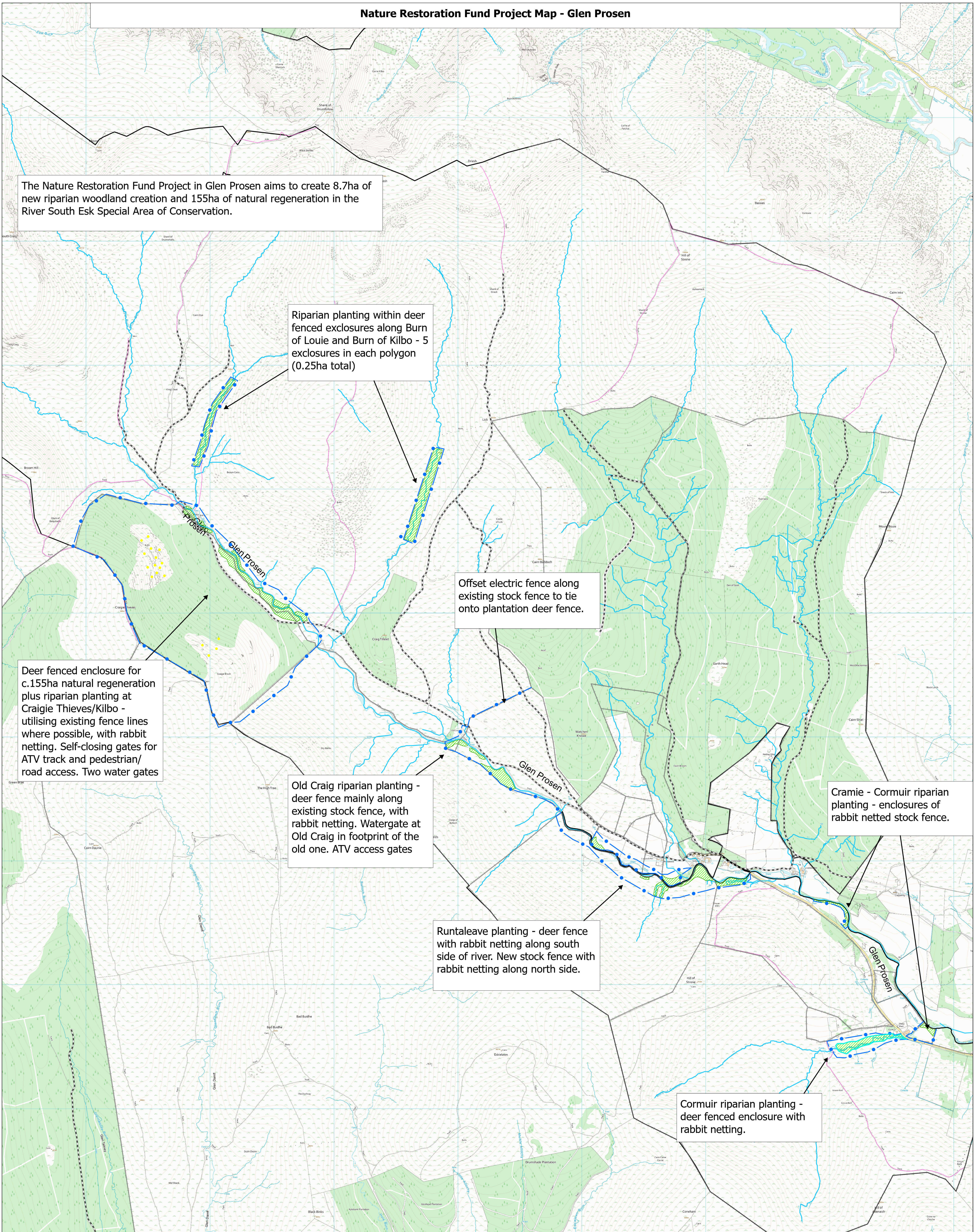
Deer fenced enclosure for c.155ha natural regeneration plus riparian planting at Craigie Thieves/Kilbo - utilising existing fence lines where possible, with rabbit netting. Self-closing gates for ATV track and pedestrian/road access. Two water gates

Old Craig riparian planting - deer fence mainly along existing stock fence, with rabbit netting. Watergate at Old Craig in footprint of the old one. ATV access gates

Cramie - Cormuir riparian planting - enclosures of rabbit netted stock fence.

Runtaleave planting - deer fence with rabbit netting along south side of river. New stock fence with rabbit netting along north side.

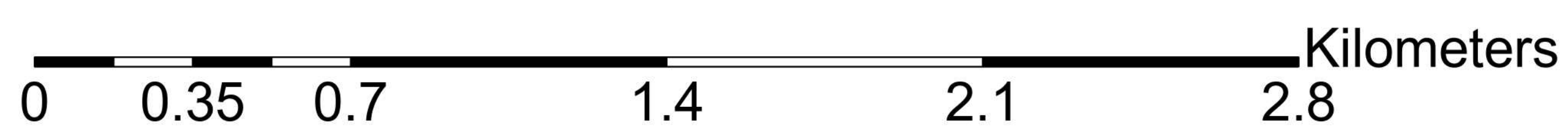
Cormuir riparian planting - deer fenced enclosure with rabbit netting.



Legend

- Fences (Scot.)
- Tracks ATV
- Forest Roads

- National Forest & Land Boundary
- Watercourses
- NRF fences
- NRF riparian planting areas
- Seed trees



Forestry and Land Scotland
Coilltearachd agus Fearann Alba