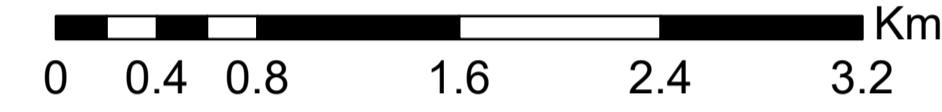


Map 23 - EIA Scoping

Legend

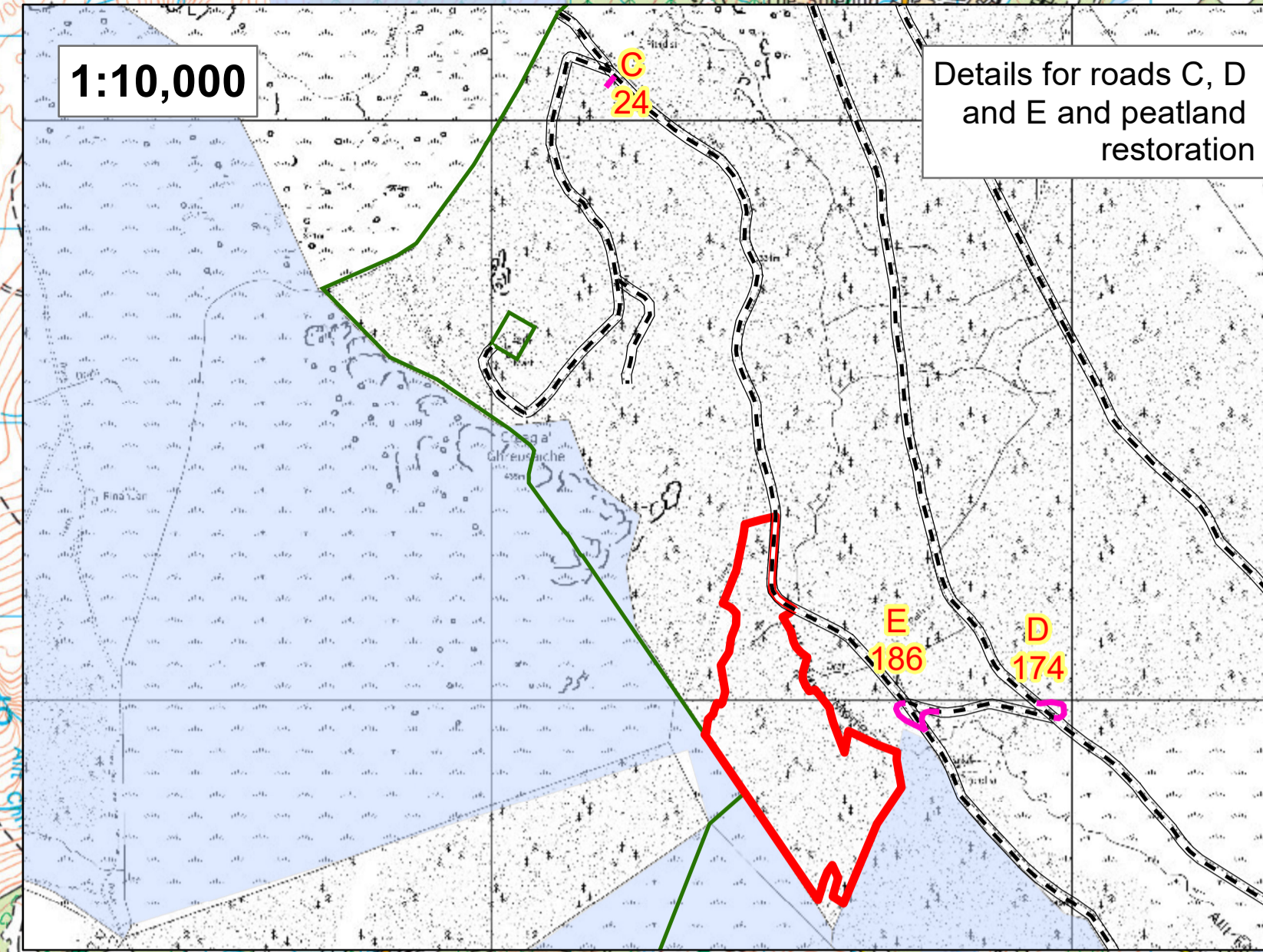
- Blocks
- New Roads
- Future Regeneration
- New Quarry
- Forest to Bog Restoration
- Designated Sites SSSI/SAC/SPA

Scale @ A1: 1:30,000

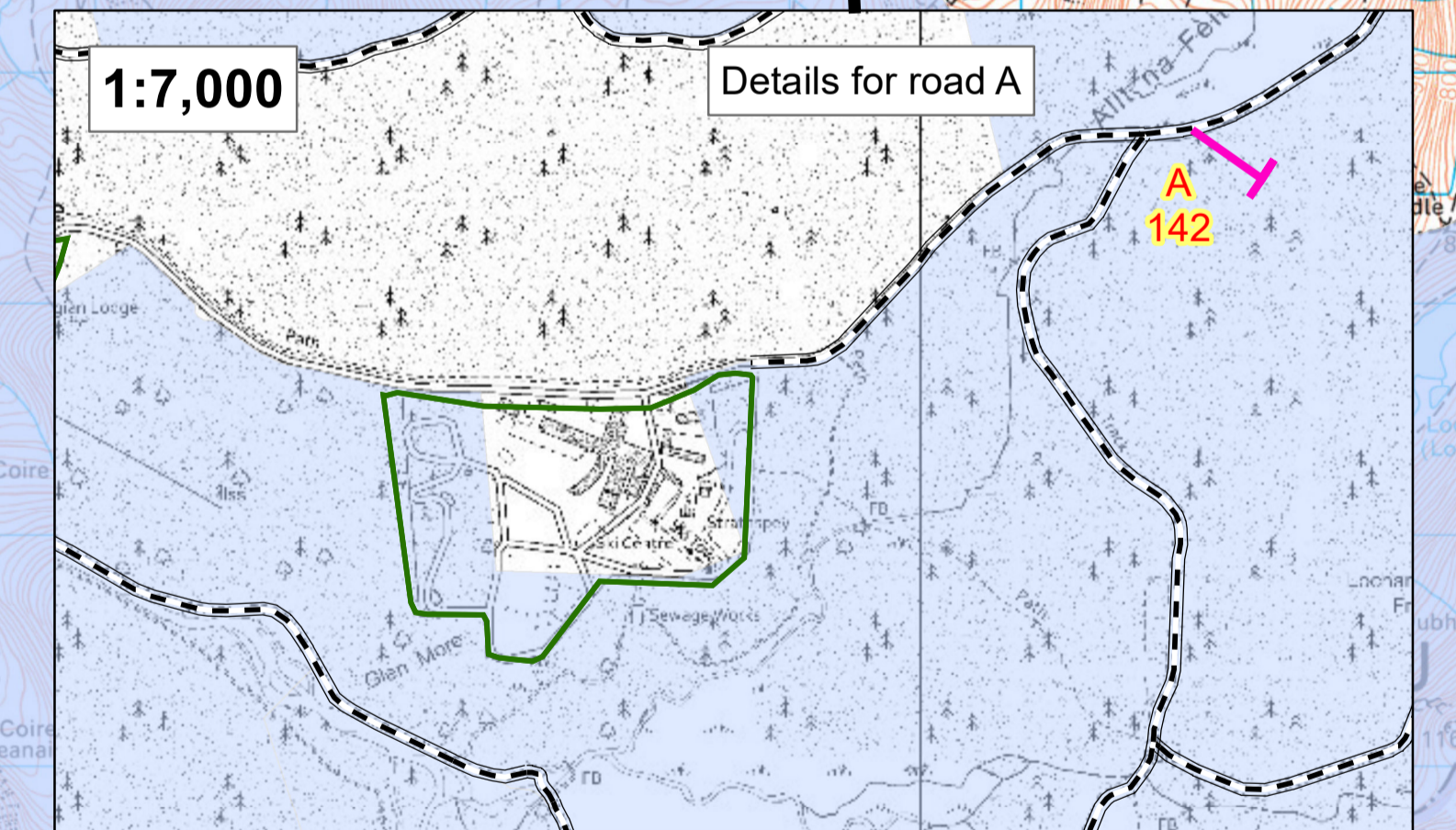


Reproduced by permission of Ordnance Survey on behalf of HMSO. © Crown copyright and database right [2022]. All rights reserved. Ordnance Survey Licence number [100021242]. © Getmapping Plc and Bluesky International Limited 2022.

Scotland's National Forest Estate is responsibly managed to the UK Woodland Assurance Standard.



Details for roads C, D and E and peatland restoration



Details for road A

New Road/Quarry	Length (m)	Area (ha)	Description (Length/Area/Construction)
A	142	0.21	Turning point to allow access and stacking space for thinning, within the SAC and SSSI
B	208	0.31	Turning point to allow access and stacking space for thinning, within the SAC and SSSI
C	24	0.04	Turning point to allow timber wagons to turn for clearfell operations.
D	174	0.26	widening a forest road corner to allow timber wagons to turn the corner
E	186	0.28	widening a forest road corner to allow timber wagons to turn the corner
1	n/a	<1	new quarry to provide road stone for North Inshriach and Glenmore
2	n/a	<1	new quarry to provide road stone for South Inshriach
Total	734m	3.1ha	