



## Appendix 3: Heritage Features

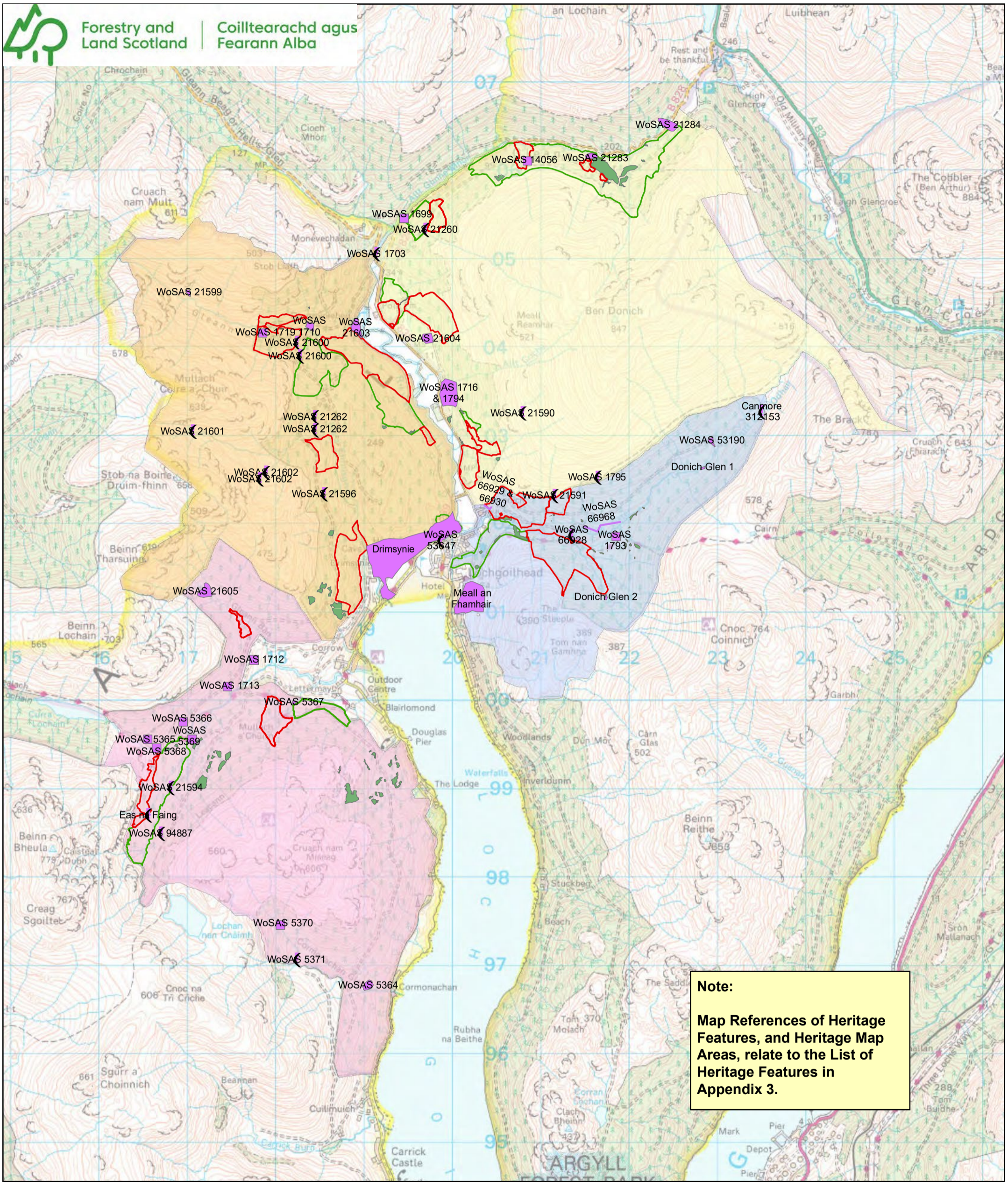
- List of heritage features in the Loch Goil Forest area
- Appendix 3 Map – Heritage Features

Appendix 3: List of Heritage Features in the Loch Goil Forest Area

Name	Site Description	Grid Reference	Map Reference	Importance	WoSAS Hyperlink
<b>Drimsynie map area:</b>					
Gleann Canachadan	The foundations of a former croft	NN 183 042	WoSAS 1710	Regional Importance	<a href="http://www.wosas.net/wosas_site.php?id=1710">http://www.wosas.net/wosas_site.php?id=1710</a>
Gleann Canachadan	Ruins of old houses	NN 178 041	WoSAS 1719		<a href="http://www.wosas.net/wosas_site.php?id=1719">http://www.wosas.net/wosas_site.php?id=1719</a>
Monadh Beag	Two unroofed shieling-huts are depicted on the 1st edition of the OS 6-inch map (Argyllshire 1869, sheet cxlii)	NN 184 031	WoSAS 21262	Regional Importance	<a href="http://www.wosas.net/wosas_site.php?id=21262">http://www.wosas.net/wosas_site.php?id=21262</a>
Eas a' Chruisgein	One unroofed shieling-hut is depicted on the 1st edition of the OS 6-inch map (Argyllshire 1869, sheet cxlii)	NN 185 023	WoSAS 21596	Regional Importance	<a href="http://www.wosas.net/wosas_site.php?id=21596">http://www.wosas.net/wosas_site.php?id=21596</a>
Gleann Canachadan	Three unroofed shieling-huts	NN 170 045	WoSAS 21599	Regional Importance	<a href="http://www.wosas.net/wosas_site.php?id=21599">http://www.wosas.net/wosas_site.php?id=21599</a>
Gleann Canachadan	What may be two unroofed shieling-huts approximately 110m apart, one of which is attached to a wall	NN 182 040	WoSAS 21600	Regional Importance	<a href="http://www.wosas.net/wosas_site.php?id=21600">http://www.wosas.net/wosas_site.php?id=21600</a>
Coire a' Chuir	One unroofed shieling-hut	NN 170 030	WoSAS 21601	Regional Importance	<a href="http://www.wosas.net/wosas_site.php?id=21601">http://www.wosas.net/wosas_site.php?id=21601</a>
Coire a' Chuir	Two unroofed shieling-huts approximately 100m apart	NN 179 025	WoSAS 21602	Regional Importance	<a href="http://www.wosas.net/wosas_site.php?id=21602">http://www.wosas.net/wosas_site.php?id=21602</a>
Drimsyniebeg	Drumsyniebeg Farm	NN 1890 0427	WoSAS 21603		<a href="https://www.wosas.net/wosas_site.php?id=21603">https://www.wosas.net/wosas_site.php?id=21603</a>
Lochgoilhead Bridge	Road bridge	NN 198 017	WoSAS 53647	Local Importance	<a href="http://www.wosas.net/wosas_site.php?id=53647">http://www.wosas.net/wosas_site.php?id=53647</a>
Drimsynie	17th-20th Century Designed Landscape	NN 194 016	Drimsynie		<i>Not online</i>
<b>Gleann Mor and Strath Goil map area:</b>					
Monevechadan	Bloomery slag has been found at NN 194 054 though nothing indicative of a bloomery was located in this area during later field visits.	NN 194 054	WoSAS 1699		<a href="http://www.wosas.net/wosas_site.php?id=1699">http://www.wosas.net/wosas_site.php?id=1699</a>
Lochgoilhead Bridge	Road bridge.	NN 191 050	WoSAS 1703	Local Importance	<a href="http://www.wosas.net/wosas_site.php?id=1703">http://www.wosas.net/wosas_site.php?id=1703</a>
Tom a' Bhlair	Township comprising one unroofed structure and a series of enclosures which is annotated as a 'Sheepfold'	NN 199 035	WoSAS 1716	Regional Importance	<a href="http://www.wosas.net/wosas_site.php?id=1716">http://www.wosas.net/wosas_site.php?id=1716</a>
Tom a' Bhlair	Cup marked rock, 5 notable cup marks.	NN 200 035	WoSAS 1794	Regional Importance	<a href="http://www.wosas.net/wosas_site.php?id=1794">http://www.wosas.net/wosas_site.php?id=1794</a>
Gleann Mor	Three enclosures on a rocky shelf, possible shielings	NN 208 060	WoSAS 14056		<a href="http://www.wosas.net/wosas_site.php?id=14056">http://www.wosas.net/wosas_site.php?id=14056</a>
Allt Donich	Two unroofed shieling-huts are depicted on the 1st edition of the OS 6-inch map	NN 196 053	WoSAS 21260	Regional Importance	<a href="http://www.wosas.net/wosas_site.php?id=21260">http://www.wosas.net/wosas_site.php?id=21260</a>
Allt Coire Leitir-Achain	Three unroofed shieling-huts are depicted on the 1st edition of the OS 6-inch map	NN 215 061	WoSAS 21283	Regional Importance	<a href="http://www.wosas.net/wosas_site.php?id=21283">http://www.wosas.net/wosas_site.php?id=21283</a>
Gleann Mor	Three unroofed shieling-huts are depicted on the 1st edition of the OS 6-inch map	NN 225 065	WoSAS 21284	Regional Importance	<a href="http://www.wosas.net/wosas_site.php?id=21284">http://www.wosas.net/wosas_site.php?id=21284</a>
Allt a' Chocaire	Two unroofed shieling-huts. Two circles, which may indicate the location of buildings, and what may be four enclosures are also shown	NN 208 032	WoSAS 21590	Regional Importance	<a href="http://www.wosas.net/wosas_site.php?id=21590">http://www.wosas.net/wosas_site.php?id=21590</a>
River Goil	Farmstead comprising one unroofed building attached to a field	NN 197 040	WoSAS 21604	Regional Importance	<a href="http://www.wosas.net/wosas_site.php?id=21604">http://www.wosas.net/wosas_site.php?id=21604</a>
<b>Donich Glen map area:</b>					
Ardgoil Forest	Bloomery slag	NN 218 018	WoSAS 1793		<a href="https://www.wosas.net/wosas_site.php?id=1793">https://www.wosas.net/wosas_site.php?id=1793</a>
Clach a' Bhreatunnaich	Large rock or boulder which local tradition states is a boundary marker.	NN 216 025	WoSAS 1795		<a href="http://www.wosas.net/wosas_site.php?id=1795">http://www.wosas.net/wosas_site.php?id=1795</a>
Ardgoil Forest	One unroofed shieling-hut	NN 211 023	WoSAS 21591	Regional Importance	<a href="http://www.wosas.net/wosas_site.php?id=21591">http://www.wosas.net/wosas_site.php?id=21591</a>
Allt Coire Odhair	Settlement: the site contains at least eight dry stone structures: rectangular, circular and oval.	NN 229 029	WoSAS 53190	Regional Importance	<a href="http://www.wosas.net/wosas_site.php?id=53190">http://www.wosas.net/wosas_site.php?id=53190</a>
Eas Garbh	Flat topped mound structure	NN 21355 01859	WoSAS 66928		<a href="https://www.wosas.net/wosas_site.php?id=66928">https://www.wosas.net/wosas_site.php?id=66928</a>
Inveronich	Stone wall	NN 20435 02179 NN 20415 02160 NN 20357 02204	WoSAS 66929		<a href="https://www.wosas.net/wosas_site.php?id=66929">https://www.wosas.net/wosas_site.php?id=66929</a>
Inveronich	Earthen bank	NN 20373 02194 NN 20406 02159 NN 20407 02150	WoSAS 66930		<a href="https://www.wosas.net/wosas_site.php?id=66930">https://www.wosas.net/wosas_site.php?id=66930</a>
Donich Water	Iron post and wire fence	NN 21674 01974 NN 21637 01901 NN 21486 01963	WoSAS 66968		<a href="https://www.wosas.net/wosas_site.php?id=66968">https://www.wosas.net/wosas_site.php?id=66968</a>
Donich Glen	One very small and one slightly larger stone walled buildings beside a river	NN 228 026	Donich Glen 1		<i>Not online</i>
Donich Glen	Sheepfold	NN 2173 0116	Donich Glen 2		<i>Not online</i>
Meall An Fhamhair	Medieval/Post-medieval Settlement and Agriculture	NN 202 011	Meall an Fhamhair		<i>Not online</i>
Coire Odhar, The Brack	Bank (earthwork), rock shelter, structure	NN 23515 03269	Canmore 312153		<a href="https://canmore.org.uk/site/312153/coire-odhar-the-brack">https://canmore.org.uk/site/312153/coire-odhar-the-brack</a>

List of Heritage Features in the Loch Goil Forest Area

<b>Lettermay map area:</b>					
Upper Cormonachan	A township annotated 'Ruins', comprising four unroofed buildings, two enclosures and a head-dyke	NS 190 967	WoSAS 5364	Regional Importance	<a href="http://www.wosas.net/wosas_site.php?id=5364">http://www.wosas.net/wosas_site.php?id=5364</a>
Curra Lochain	A group of three or four shieling-huts.	NS 165 995	WoSAS 5365		<a href="http://www.wosas.net/wosas_site.php?id=5365">http://www.wosas.net/wosas_site.php?id=5365</a>
Struth Ban	Sub-rectangular building 17' x 12', a 9' diameter circle, and a ruined croft.	NS 169 997	WoSAS 5366		<a href="http://www.wosas.net/wosas_site.php?id=5366">http://www.wosas.net/wosas_site.php?id=5366</a>
Lettermay	A circle, 8'-9' in diameter, a D-shaped enclosure of 6' radius, and 3 crofts.	NS 182 999	WoSAS 5367	Regional Importance	<a href="http://www.wosas.net/wosas_site.php?id=5367">http://www.wosas.net/wosas_site.php?id=5367</a>
Struth Ban	A sub-rectangular building 12' x 10'	NS 166 994	WoSAS 5368		<a href="http://www.wosas.net/wosas_site.php?id=5368">http://www.wosas.net/wosas_site.php?id=5368</a>
Lettermay Burn	Tumbled stones in an arc, 9' x 7', possible enclosure.	NS 170 995	WoSAS 5369		<a href="http://www.wosas.net/wosas_site.php?id=5369">http://www.wosas.net/wosas_site.php?id=5369</a>
Cormonachan Glen	Remains of a bothy, 3 shieling-huts and other modern enclosures.	NS 180 974	WoSAS 5370		<a href="http://www.wosas.net/wosas_site.php?id=5370">http://www.wosas.net/wosas_site.php?id=5370</a>
Cormonachan Burn	Shieling hut	NS 1823 9705	WoSAS 5371		<a href="https://www.wosas.net/wosas_site.php?id=5371">https://www.wosas.net/wosas_site.php?id=5371</a>
Gleann Ban	Bloomery slag	NN 177 004	WoSAS 1712		<a href="https://www.wosas.net/wosas_site.php?id=1712">https://www.wosas.net/wosas_site.php?id=1712</a>
Bealach Moine	Bloomery slag has been found at NN 174 001, however no iron working site located.	NN 174 001	WoSAS 1713		<a href="http://www.wosas.net/wosas_site.php?id=1713">http://www.wosas.net/wosas_site.php?id=1713</a>
Lettermay Burn	What may be one unroofed shieling-hut	NS 168 990	WoSAS 21594	Regional Importance	<a href="http://www.wosas.net/wosas_site.php?id=21594">http://www.wosas.net/wosas_site.php?id=21594</a>
Gleann Ban	Four unroofed shieling-huts are depicted on the 1st edition of the OS 6-inch map (Argyllshire 1869, sheet cxlii)	NN 172 012	WoSAS 21605	Regional Importance	<a href="http://www.wosas.net/wosas_site.php?id=21605">http://www.wosas.net/wosas_site.php?id=21605</a>
Dunloskin	Turf structure	NS 16702 98485	WoSAS 94887		<i>Not online</i>
Eas na Faing	Sheepfold	NS 1654 9868	Eas na Faing		<i>Not online</i>



**Note:**  
Map References of Heritage Features, and Heritage Map Areas, relate to the List of Heritage Features in Appendix 3.

**Appendix 3 Map - Heritage Features**

Scale @ A3: 1:40,000

Date: 17/05/2024

Author: Jamie.Howie

**Legend**



Heritage Feature Polygons



Heritage Linear Features



Heritage Points (smaller features)

**Heritage Map Areas**



Donich Glen



Drimsynie



Gleann Mor and Strath Goll



Lettermay



Proposed Clearfell Coupes



Proposed Thinning Coupes



Selective Fell or Thinning

