

Paddockmuir Wood
Concept Map

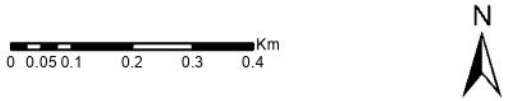
Scale @ A3: 1:12,500
Date: 23/09/2025

Legend

- Core Paths
- Watercourses
- Overhead powerline
- Underground powerline
- Scheduled Monuments
- Special Areas of Conservation
- Special Protection Areas
- Sites of Special Scientific Interest

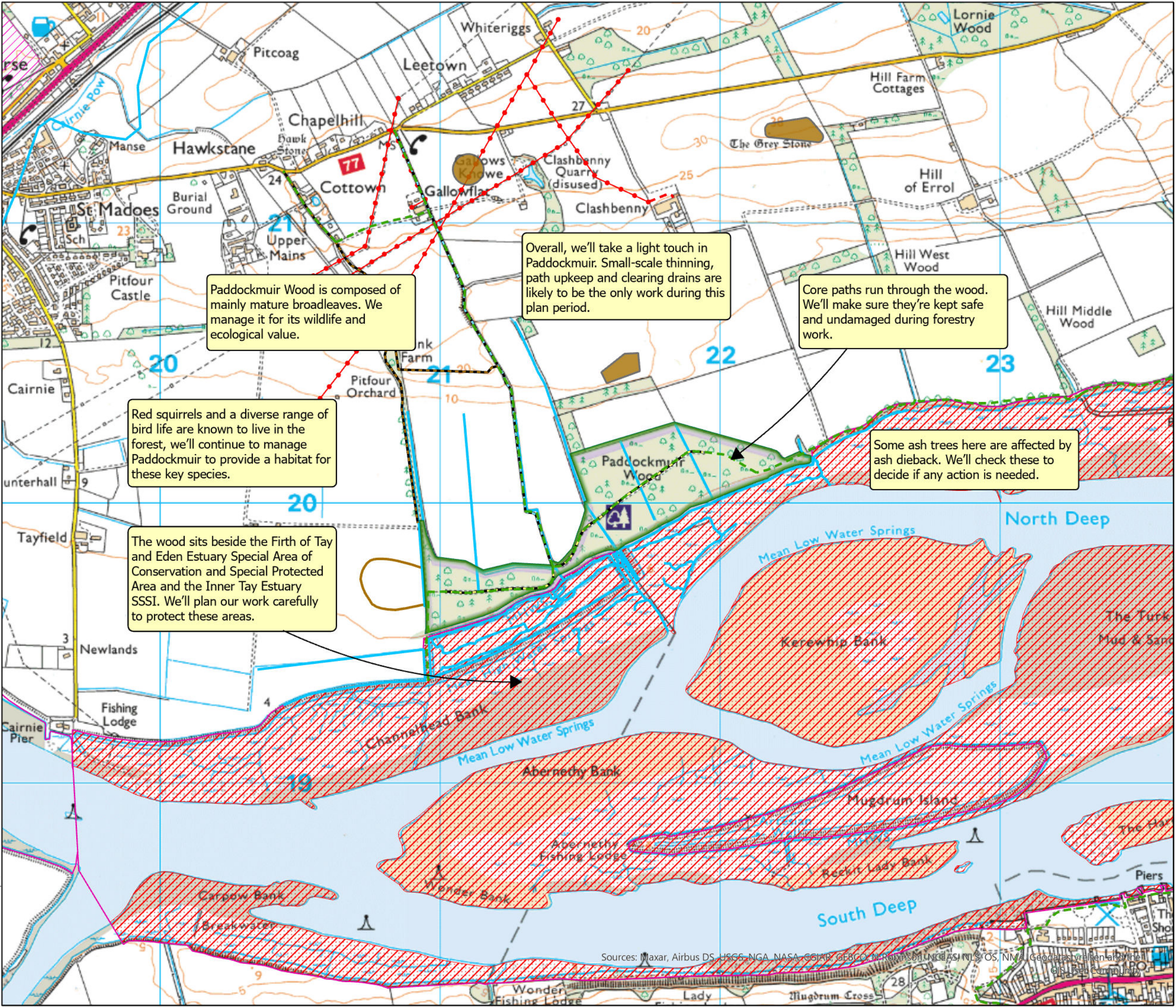
Forest Roads

- Unclassified
- B
- C
- LMP Area



Reproduced by permission of Ordnance Survey on behalf of HMSO.
© Crown copyright and database right [2025]. All rights reserved.
Ordnance Survey Licence number AC0000820350.
© Getmapping Plc and Bluesky International Limited 2025.

Declaration by FLS as an Operator.
All timber arising from the FLS National Forests and Land represents a negligible risk under EUTR (No 995/210).



Overall, we'll take a light touch in Paddockmuir. Small-scale thinning, path upkeep and clearing drains are likely to be the only work during this plan period.

Core paths run through the wood. We'll make sure they're kept safe and undamaged during forestry work.

Paddockmuir Wood is composed of mainly mature broadleaves. We manage it for its wildlife and ecological value.

Red squirrels and a diverse range of bird life are known to live in the forest, we'll continue to manage Paddockmuir to provide a habitat for these key species.

The wood sits beside the Firth of Tay and Eden Estuary Special Area of Conservation and Special Protected Area and the Inner Tay Estuary SSSI. We'll plan our work carefully to protect these areas.

Some ash trees here are affected by ash dieback. We'll check these to decide if any action is needed.

Sources: Maxar, Airbus DS, USGS-NGA, NASA, CGIAR, GEBCO, N. Robinson, NCEAS, NLS, OS, NMA, Geodatasystem and the GIS User Community