

**MAINSHILL PLANTING  
(AMENDMENT)**

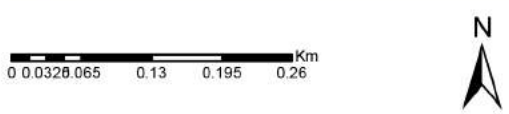
Author: U321816  
Scale @ A3: 1:7,000  
Date: 01/06/2021

**Legend**

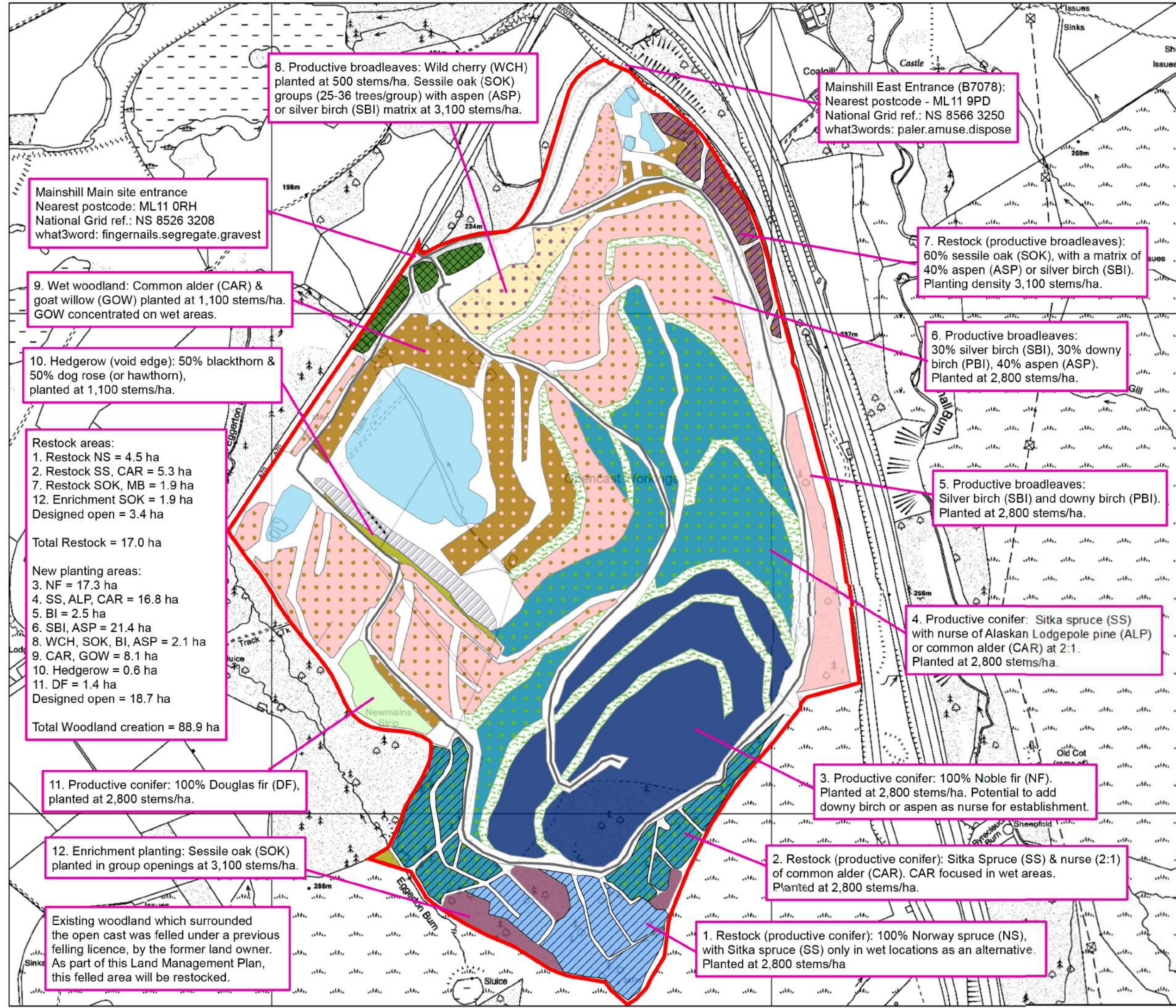
- Mainshill Boundary
- Existing woodland
- Restock area
- Forest road

**Species**

- Douglas fir
- Norway spruce
- Noble fir
- Sitka spruce, nurse (alder/lodgepole pine)
- Blackthorn, dog rose/hawthorn
- Sessile oak, aspen, birch
- Sessile oak
- Wild cherry, oak, aspen, birch
- Birch
- Birch, aspen
- Common alder, goat willow
- Geological feature
- Grass
- Open
- Water
- Mixed conifer



Reproduced by permission of Ordnance Survey on behalf of HMSO.  
© Crown copyright and database right [2021]. All rights reserved.  
Ordnance Survey Licence number [100021242].  
© Getmapping Plc and Bluesky International Limited 2021.



- 8. Productive broadleaves: Wild cherry (WCH) planted at 500 stems/ha. Sessile oak (SOK) groups (25-36 trees/group) with aspen (ASP) or silver birch (SBI) matrix at 3,100 stems/ha.
- Mainshill Main site entrance  
Nearest postcode: ML11 0RH  
National Grid ref.: NS 8526 3208  
what3word: fingernails.seggregate.gravest
- 9. Wet woodland: Common alder (CAR) & goat willow (GOW) planted at 1,100 stems/ha. GOW concentrated on wet areas.
- 10. Hedgerow (void edge): 50% blackthorn & 50% dog rose (or hawthorn), planted at 1,100 stems/ha.
- Restock areas:  
1. Restock NS = 4.5 ha  
2. Restock SS, CAR = 5.3 ha  
7. Restock SOK, MB = 1.9 ha  
12. Enrichment SOK = 1.9 ha  
Designed open = 3.4 ha  
  
Total Restock = 17.0 ha  
  
New planting areas:  
3. NF = 17.3 ha  
4. SS, ALP, CAR = 16.8 ha  
5. BI = 2.5 ha  
6. SBI, ASP = 21.4 ha  
8. WCH, SOK, BI, ASP = 2.1 ha  
9. CAR, GOW = 8.1 ha  
10. Hedgerow = 0.6 ha  
11. DF = 1.4 ha  
Designed open = 18.7 ha  
  
Total Woodland creation = 88.9 ha
- 7. Restock (productive broadleaves): 60% sessile oak (SOK), with a matrix of 40% aspen (ASP) or silver birch (SBI). Planting density 3,100 stems/ha.
- 6. Productive broadleaves: 30% silver birch (SBI), 30% downy birch (PBI), 40% aspen (ASP). Planted at 2,800 stems/ha.
- 5. Productive broadleaves: Silver birch (SBI) and downy birch (PBI). Planted at 2,800 stems/ha.
- 4. Productive conifer: Sitka spruce (SS) with nurse of Alaskan Lodgepole pine (ALP) or common alder (CAR) at 2:1. Planted at 2,800 stems/ha.
- 3. Productive conifer: 100% Noble fir (NF). Planted at 2,800 stems/ha. Potential to add downy birch or aspen as nurse for establishment.
- 2. Restock (productive conifer): Sitka Spruce (SS) & nurse (2:1) of common alder (CAR). CAR focused in wet areas. Planted at 2,800 stems/ha.
- 1. Restock (productive conifer): 100% Norway spruce (NS), with Sitka spruce (SS) only in wet locations as an alternative. Planted at 2,800 stems/ha
- 11. Productive conifer: 100% Douglas fir (DF), planted at 2,800 stems/ha.
- 12. Enrichment planting: Sessile oak (SOK) planted in group openings at 3,100 stems/ha.
- Existing woodland which surrounded the open cast was felled under a previous felling licence, by the former land owner. As part of this Land Management Plan, this felled area will be restocked.
- Mainshill East Entrance (B7078):  
Nearest postcode - ML11 9PD  
National Grid ref.: NS 8566 3250  
what3words: paler.amuse.dispose