



Forestry and  
Land Scotland

Coilltearachd agus  
Fearann Alba

# Have your say

## Glenrigh and Callart

### What is today's consultation about?

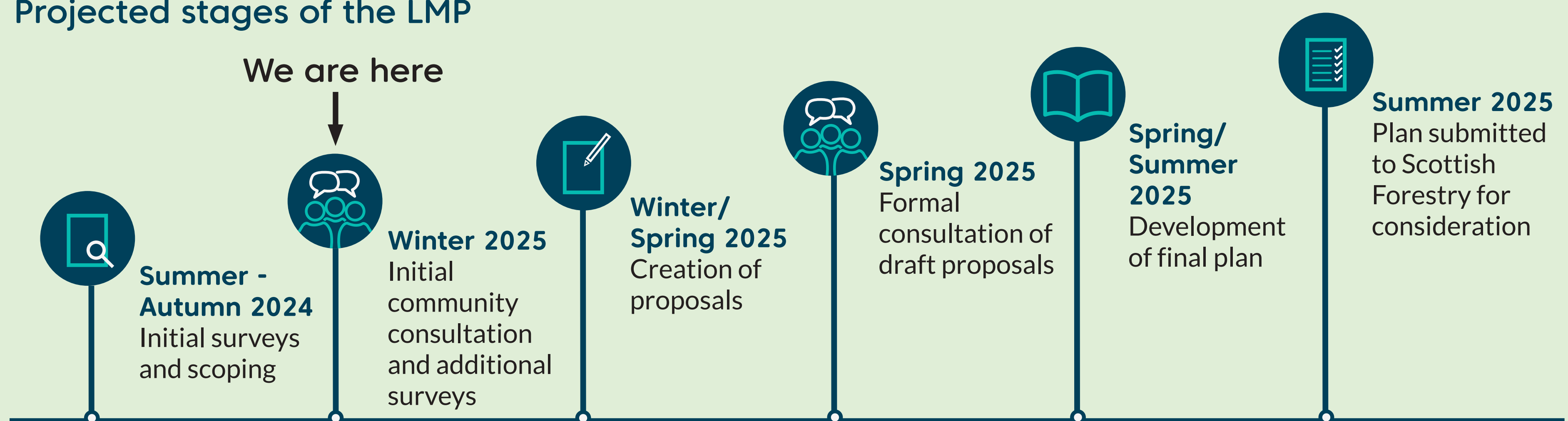
Welcome to this exhibition looking at the long term vision for Glenrigh and Callart. The purpose of this event is to provide you with information, facilitate discussion and to let you know how you can comment on the Land Management Plan (LMP) currently being developed. In addition to these exhibition boards, you can find more information on our website:

**forestryandland.gov.scot**

### What is the purpose of a Land Management Plan?

LMP's describe how Forestry and Land Scotland intends to manage the landscape over a period of 10 years, and also set out our longer term objectives. When we develop an LMP, we gather views from a range of different stakeholders, most particularly from local communities. This helps us to develop the plan while balancing competing objectives.

#### Projected stages of the LMP



### How to comment

We are in the scoping stage of this plan and want to hear your views. Please use one of the following methods to share your opinions or to find out more as the plan is in development.

- 0300 067 6650
- [enquiries.west@forestryandland.gov.scot](mailto:enquiries.west@forestryandland.gov.scot)
- Forestry and Land Scotland, Torlundy, Fort William, PH33 6SW
- [forestryandland.gov.scot/what-we-do/planning/consultations](https://forestryandland.gov.scot/what-we-do/planning/consultations)



**forestryandland.gov.scot**





## The site and surrounding area

### Location

The Glenrigh and Callart Land Management Plan (LMP) covers a total area of 2,366ha. The communities of Inchree and Onich neighbour Glenrigh to the west and North Ballachulish lies to the west of the Callart forest block, with South Ballachulish, Ballachulish and Glencoe to the south.

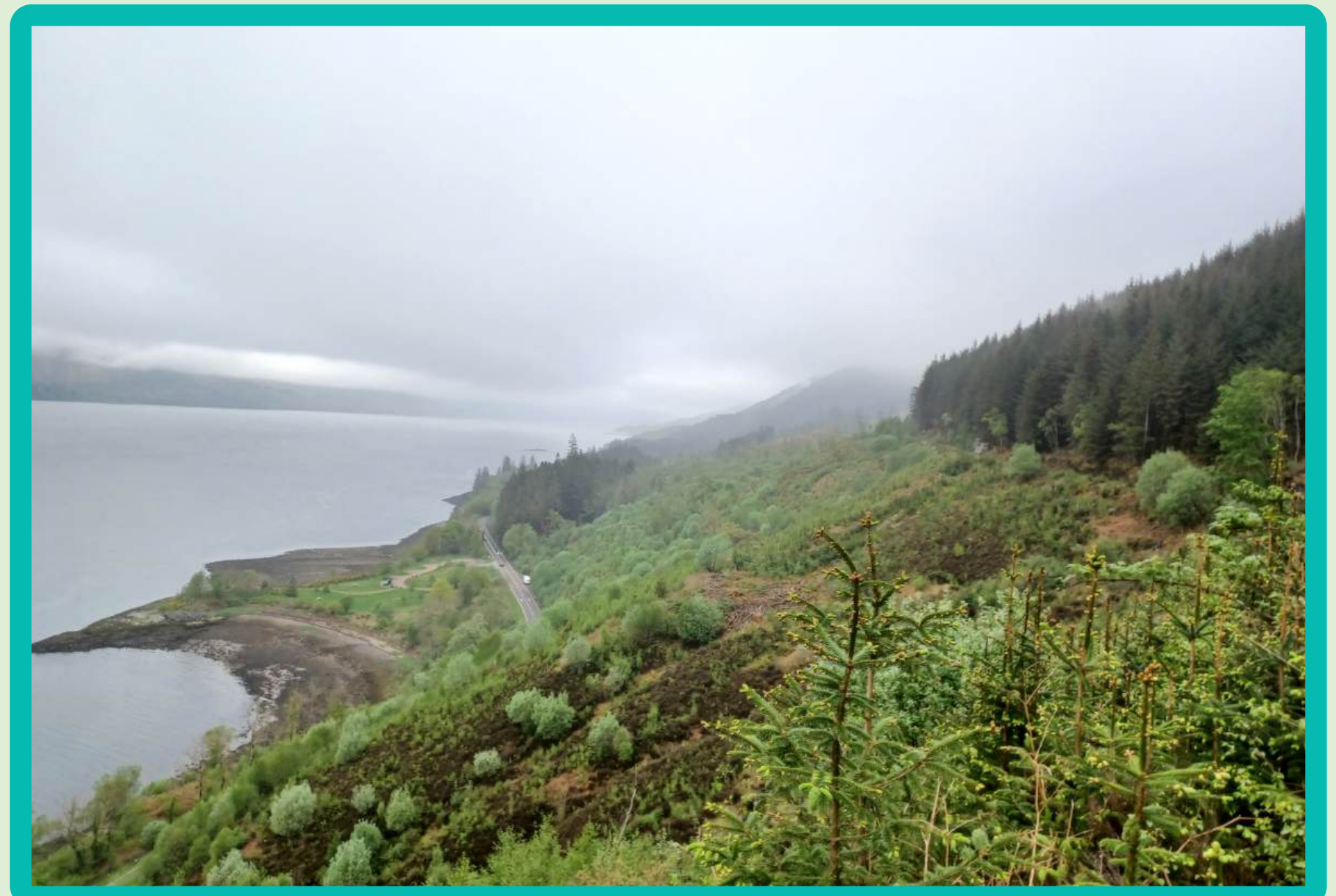
### Existing conditions

Within the Glenrigh block, around 45% of the area is wooded with a large amount of open and agricultural land. Sitka spruce accounts for over two thirds of the woodland cover. Glenrigh contains road access to most of the site, offering a good level of operational access.

The Onich to North Ballachulish Woods Site of Special Scientific Interest and Special Area of Conservation intersects the block to the south. There are also areas of ancient woodland in the west. The site boasts nationally significant fen habitat. Glenrigh hosts a widely used network of popular walking routes.

Woodland cover accounts for nearly 60% of the land at Callart. Around 170ha of the block is covered by a Plantation on Ancient Woodland Site (PAWS) designation. A major challenge to any PAWS restoration is widespread invasive regeneration. Callart has lower visitor numbers with no formal walking routes

Both blocks contain important fauna species such as white-tailed eagle, red squirrel and pine marten. There are also locally important heritage sites including a military road.







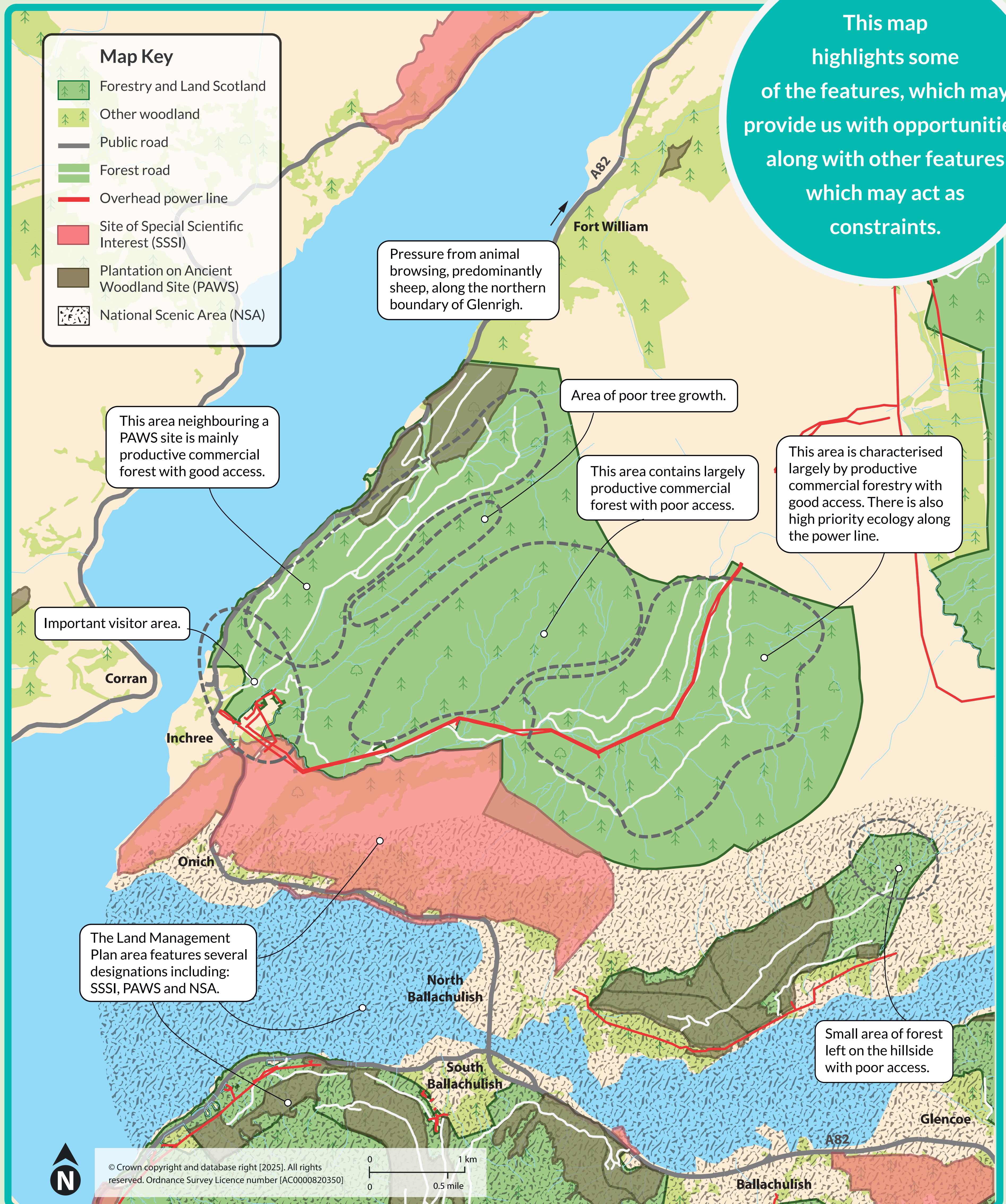
## Context







## Constraints and opportunities



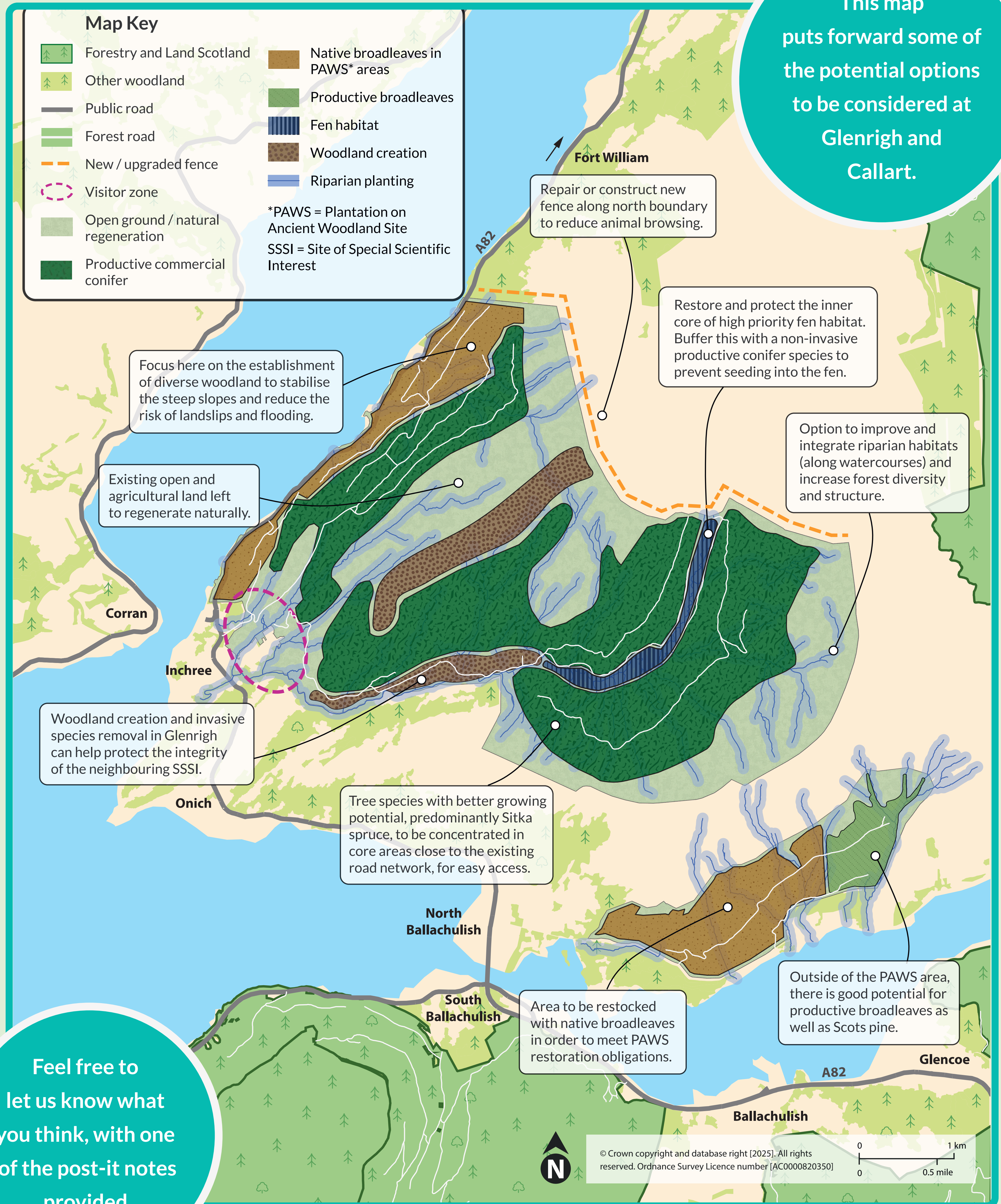
This map highlights some of the features, which may provide us with opportunities, along with other features which may act as constraints.





## Concept

This map  
puts forward some of  
the potential options  
to be considered at  
Glenrigh and  
Callart.



Feel free to  
let us know what  
you think, with one  
of the post-it notes  
provided





# Draft LMP objectives

## Glenrigh

- Continue softwood sawlog production and work on the potential for hardwood production.
- Establish diverse woodland above the A82 and the Corrychurrachan catchment to increase stability of the upper slopes and reduce the risk of flooding and landslips.
- Prioritise larch removal and windblow clearance over the next ten years.
- Restore and maintain the valuable fen habitat in Glenrigh.
- Restore high ecological potential Plantation on Ancient Woodland Sites (PAWS) to native woodland.

- Develop a mixed woodland around the communities of Inchree and Birchbrae to enhance recreation experience.
- Explore opportunities for woodland creation.

## Callart

- Restore high ecological potential PAWS areas to native woodland.
- Transition from non-native conifers to productive broadleaves, especially oak, sycamore and Scots pine.

## Have your say!

We are keen to hear your views on our objectives, as well as how and why you value this place. Please use the post-it notes provided to add to the maps on the tables.

## Keep these questions in mind:

- What is your connection to this place?
- Why is this place important to you?
- Is there a significant feature or issues we should be aware of?
- Do you have a vision of what this forest and landscape should look like in the future?

## Next steps

We will carry out surveys and collect information as well as reviewing all comments received from stakeholders before formalising our plans.