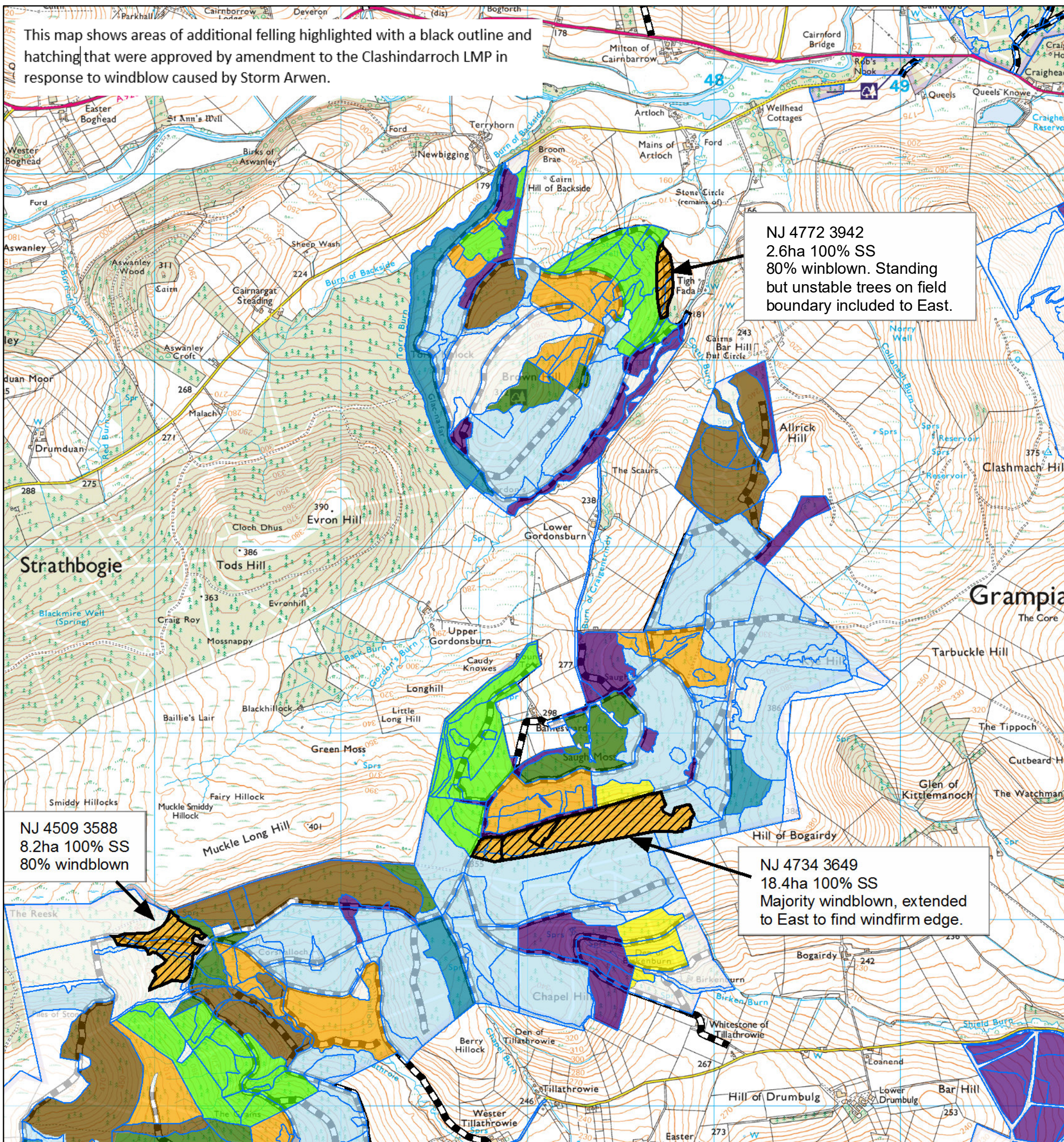




This map shows areas of additional felling highlighted with a black outline and hatching that were approved by amendment to the Clashindarroch LMP in response to windblow caused by Storm Arwen.



NJ 4772 3942
2.6ha 100% SS
80% windblown. Standing but unstable trees on field boundary included to East.

NJ 4509 3588
8.2ha 100% SS
80% windblown

NJ 4734 3649
18.4ha 100% SS
Majority windblown, extended to East to find windfirm edge.

Legend

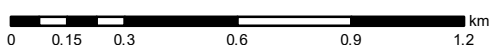
- Sub-compartments
- Scenario Management Coupes (Phase 1 starts 2020)
- Phase 3 felling (2030 - 2034)
- Phase 4 felling (2035 - 2039)
- Phase 5 felling (2040 - 2044)
- Phase 6 felling (2045 - 2049)
- Phase 7 felling (2050 - 2054)
- After 2054
- Long Term Retention (Fell after Phase 3)
- Natural Reserve
- Minimum Intervention
- Coppice
- Low Impact Silviculture
- Open
- Forest Roads

Clash North Detail

Scale @ A3: 1:20,000

Date: 30/08/2023

Author: Euan Stewart



Scotland's national forests and land are responsibly managed to the UK Woodland Assurance Standard.

