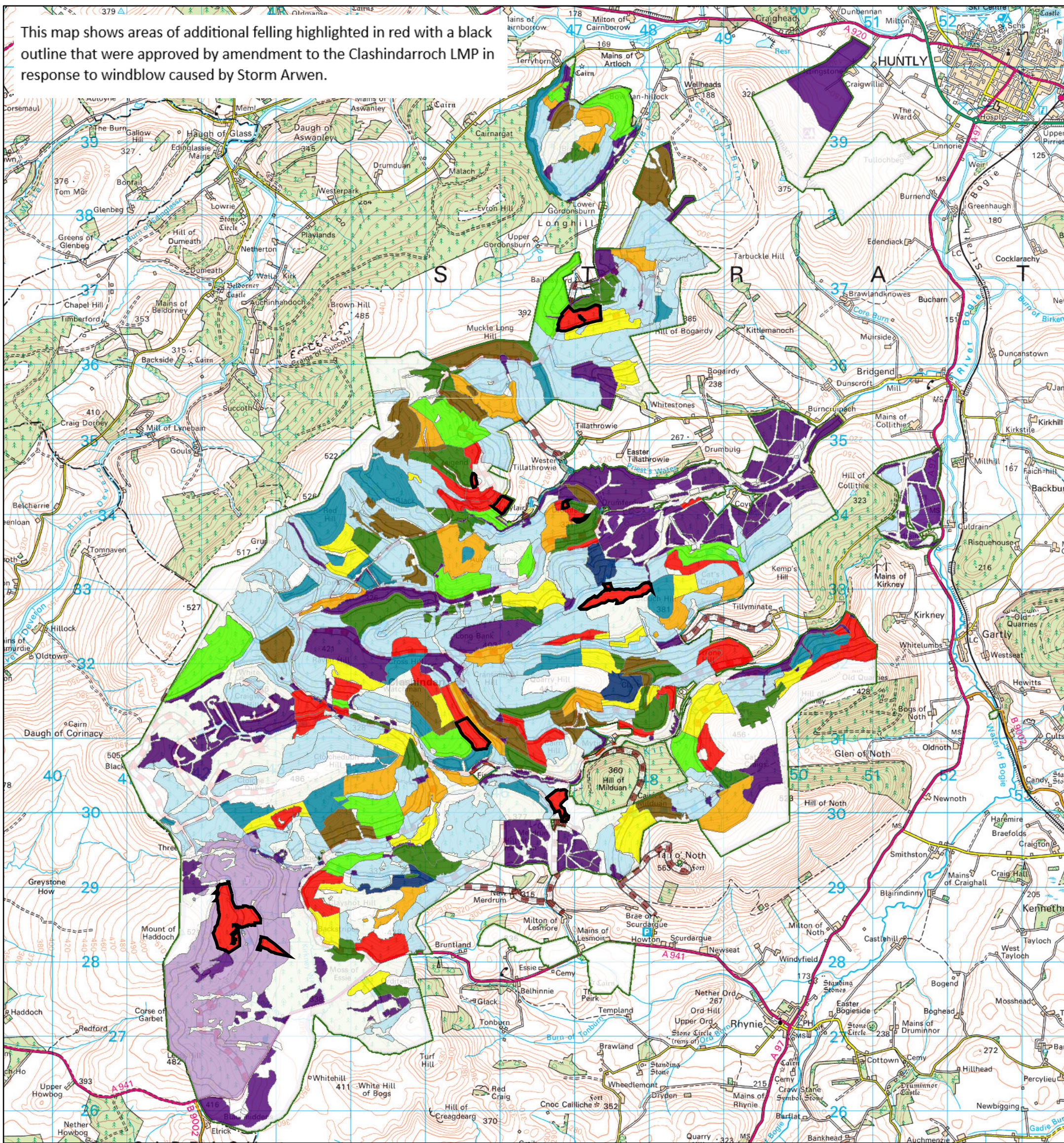




This map shows areas of additional felling highlighted in red with a black outline that were approved by amendment to the Clashindarroch LMP in response to windblow caused by Storm Arwen.

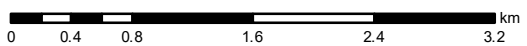


Updated Management map

Scale @ A3: 1:50,000

Date: 13/09/2022

Author: Euan Stewart



Reproduced by permission of Ordnance Survey on behalf of HMSO. © Crown copyright and database right 2022. All rights reserved. Ordnance Survey Licence number 100024925. © Getmapping Plc and Bluesky International Limited 2022.



Legend

Scenario Management Coupes (Phase 1 starts 2021)

- Recently Felled
- Phase 1 felling (2021 - 2025)
- Phase 2 felling (2026 - 2030)
- Phase 3 felling (2031 - 2035)
- Phase 4 felling (2036 - 2040)
- Phase 5 felling (2041 - 2045)
- Phase 6 felling (2046 - 2050)

- Phase 7 felling (2051 - 2055)
- After 2055
- Low Impact Silviculture
- Natural Reserve
- Minimum Intervention
- Coppice
- Long Term Retention (Fell after Phase 3)
- Open

Forest Roads (Classification)

- Class A
- Class B
- Class C
- Restricted
- Transfer Point
- Unclassified
- Blocks

Scotland's national forests and land are responsibly managed to the UK Woodland Assurance Standard.

