





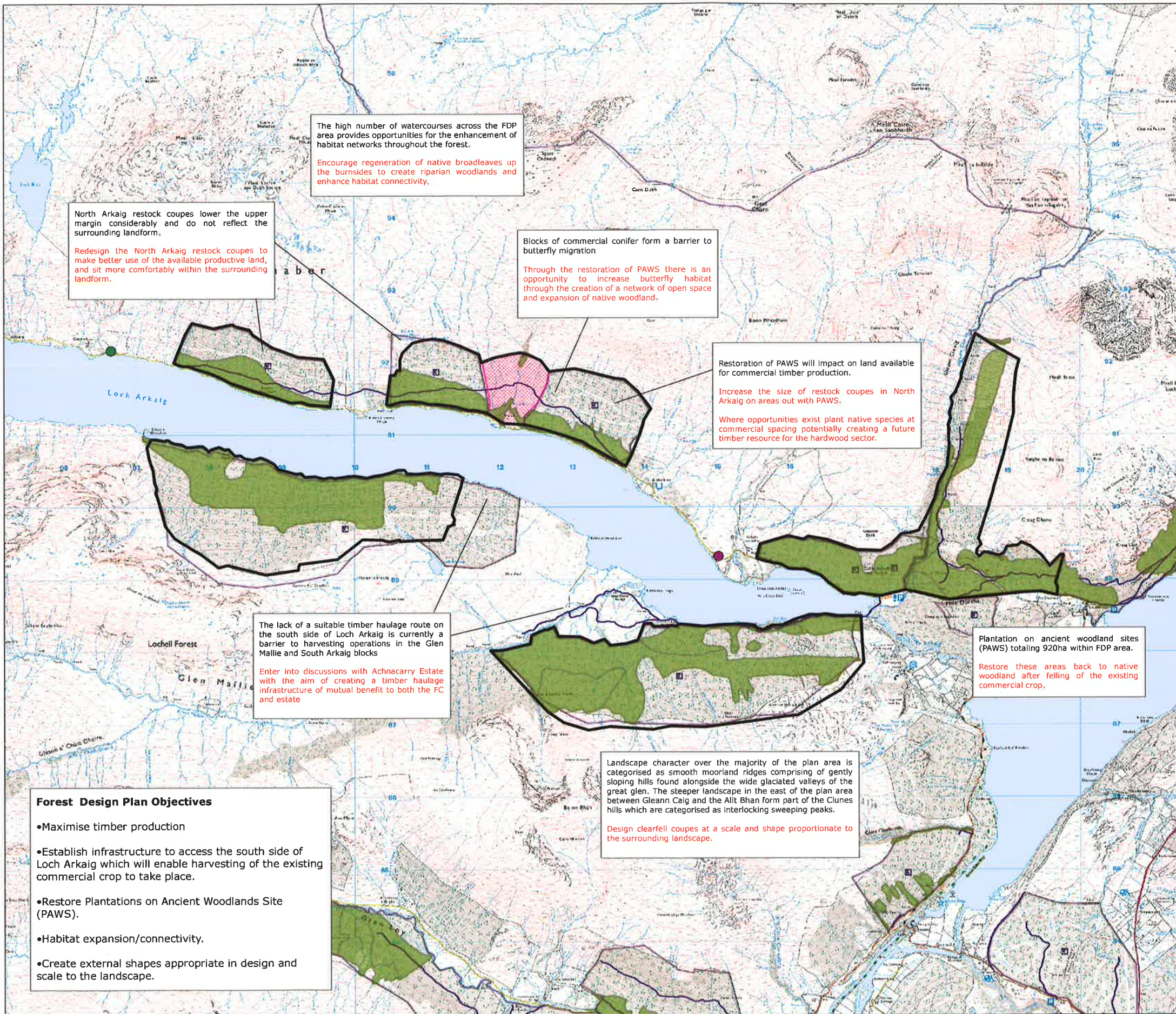


**Lochaber Forest District**  
**Loch Arkaig FDP**  
**Analysis and Concept plan**

**Legend**

-  Plan Boundary
-  Plantation on Ancient Woodland Site
-  Mhuic butterfly reserve
-  Viewpoint 1
-  Viewpoint 2
-  Road Segments



The high number of watercourses across the FDP area provides opportunities for the enhancement of habitat networks throughout the forest.  
Encourage regeneration of native broadleaves up the burn-sides to create riparian woodlands and enhance habitat connectivity.

North Arkaig restock coupes lower the upper margin considerably and do not reflect the surrounding landform.  
Redesign the North Arkaig restock coupes to make better use of the available productive land, and sit more comfortably within the surrounding landform.

Blocks of commercial conifer form a barrier to butterfly migration  
Through the restoration of PAWS there is an opportunity to increase butterfly habitat through the creation of a network of open space and expansion of native woodland.

Restoration of PAWS will impact on land available for commercial timber production.  
Increase the size of restock coupes in North Arkaig on areas out with PAWS.  
Where opportunities exist plant native species at commercial spacing potentially creating a future timber resource for the hardwood sector.

The lack of a suitable timber haulage route on the south side of Loch Arkaig is currently a barrier to harvesting operations in the Glen Malle and South Arkaig blocks  
Enter into discussions with Achnacarry Estate with the aim of creating a timber haulage infrastructure of mutual benefit to both the FC and estate

Plantation on ancient woodland sites (PAWS) totaling 920ha within FDP area.  
Restore these areas back to native woodland after felling of the existing commercial crop.

Landscape character over the majority of the plan area is categorised as smooth moorland ridges comprising of gently sloping hills found alongside the wide glaciated valleys of the great glen. The steeper landscape in the east of the plan area between Gleann Caig and the Allt Bhan form part of the Cluness hills which are categorised as interlocking sweeping peaks.  
Design clearfell coupes at a scale and shape proportionate to the surrounding landscape.

- Forest Design Plan Objectives**
- Maximise timber production
  - Establish infrastructure to access the south side of Loch Arkaig which will enable harvesting of the existing commercial crop to take place.
  - Restore Plantations on Ancient Woodlands Site (PAWS).
  - Habitat expansion/connectivity.
  - Create external shapes appropriate in design and scale to the landscape.



1:25,000