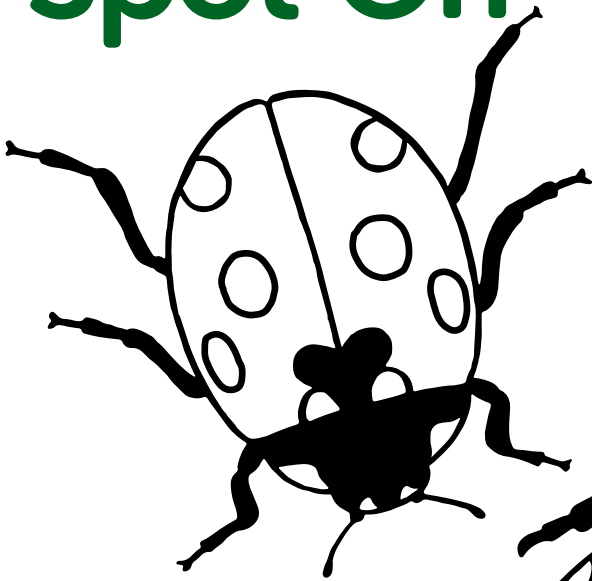




Do you know your 7-spot ladybird from your cream-spot? Use the descriptions to colour in the ladybirds in the correct colours. Then see how many different types you can discover when you're next outdoors.

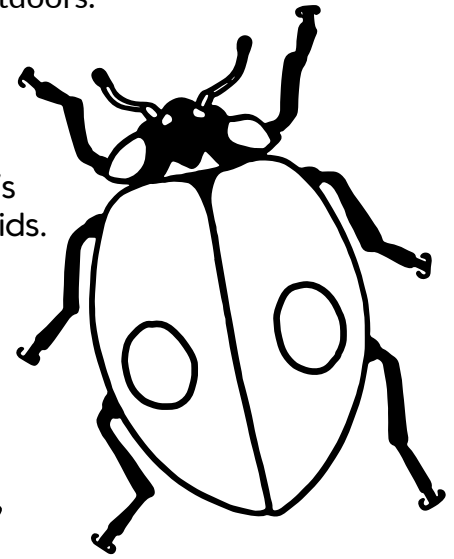
Spot On



2-Spot >

One of our most common ladybirds and a gardener's friend as it loves to eat aphids.

- red wing cases
- black spots



7-Spot ^

The most familiar of our ladybirds. Will live anywhere there is a supply of aphids for it to eat.

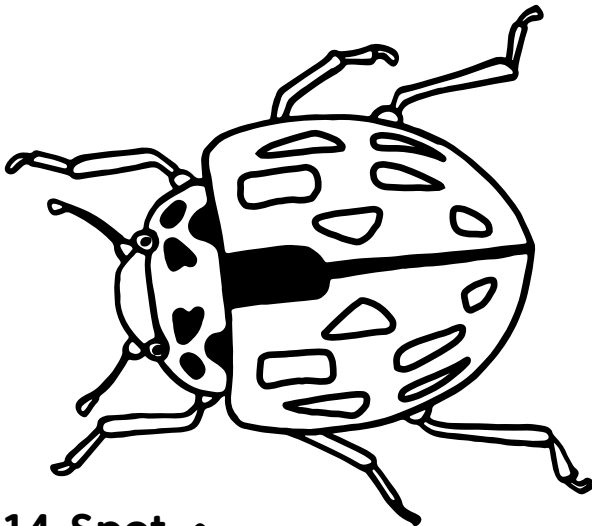
- red wing cases
- black spots



< Eyed

Our largest ladybird and is usually found on pine trees.

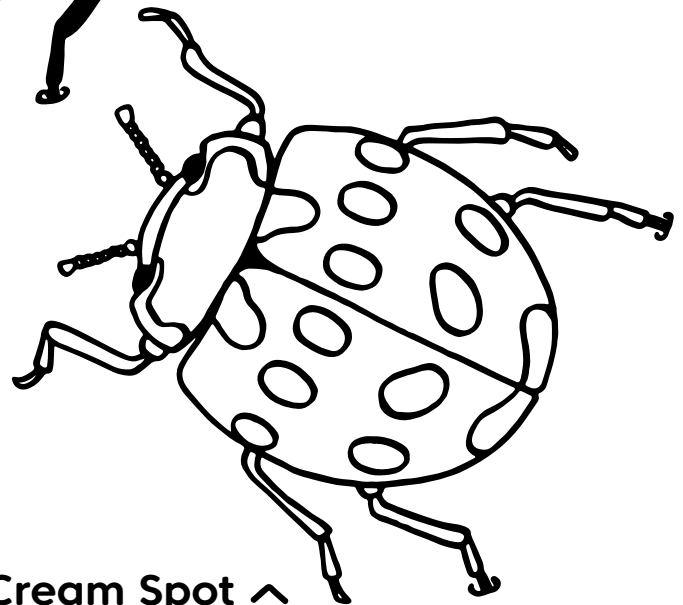
- red wing cases
- black spots ringed in yellow



14-Spot ^

One of three yellow ladybirds that can be found in Britain. Lives in grasslands, gardens and woodland.

- yellow wing cases
- black rectangular spots
- light brown legs



Cream Spot ^

Eats aphids and psyllids and is usually found on leaves and shrubs in hedgerows.

- maroon wing cases
- cream spots
- brown legs