

M5: Climate

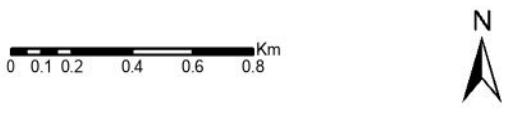
Author: FLS Planning
Scale @ A3: 1:25,000
Date: 4/16/2025

Legend

 LMP Boundary

Climate Model

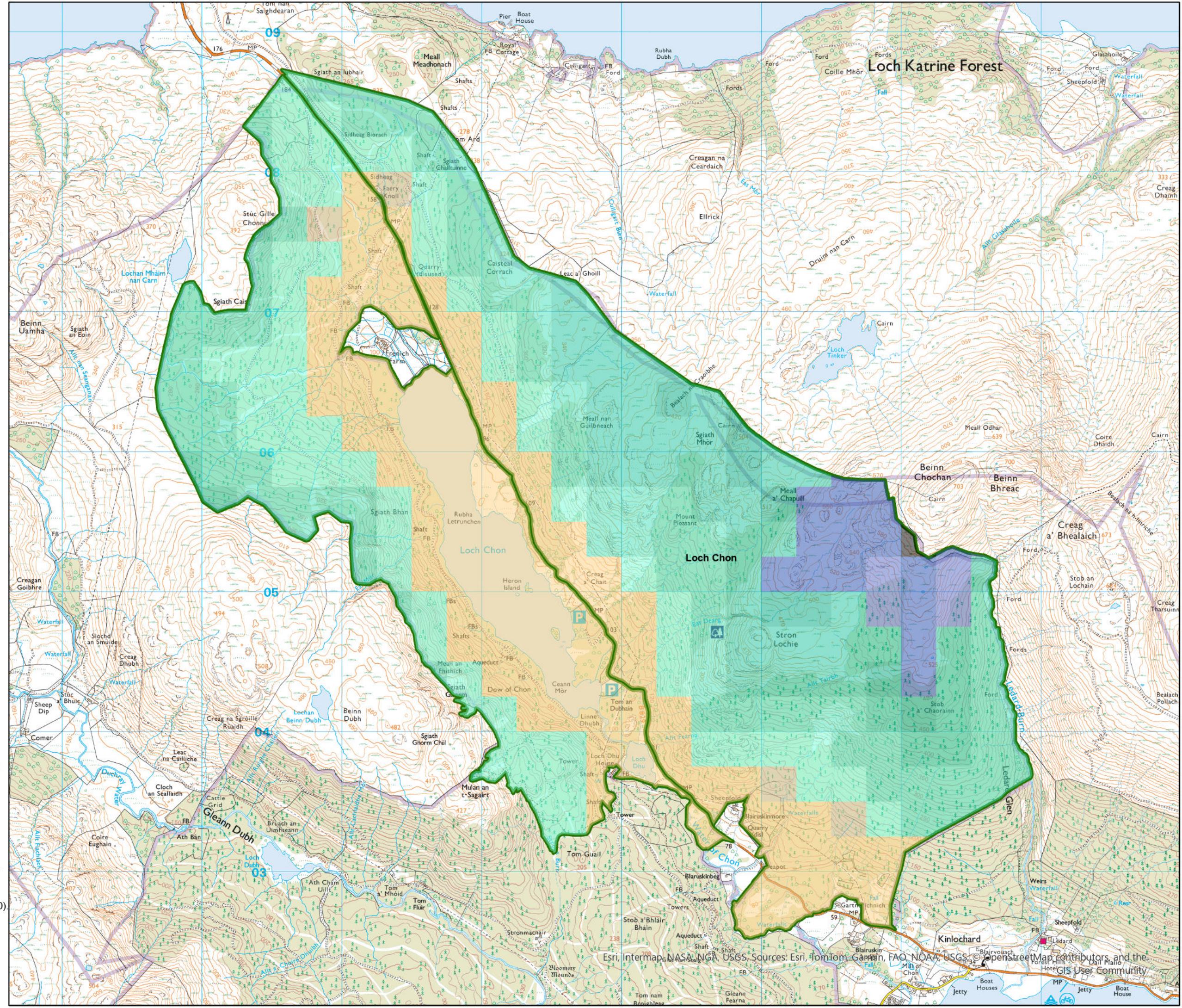
-  Cool, Wet, Highly Exposed
-  Cool, Wet, Moderately Exposed
-  Cool, Wet, Severely Exposed
-  Cool, Wet, Sheltered
-  Sub Alpine, Wet, Highly Exposed
-  Sub Alpine, Wet, Severely Exposed
-  Sub Alpine, Wet, Too Exposed for Forestry
-  Warm, Moist, Sheltered
-  Warm, Wet, Sheltered



Reproduced by permission of Ordnance Survey on behalf of HMSO.
© Crown copyright and database right [2025]. All rights reserved.
Ordnance Survey Licence number [100024925].
© Getmapping Plc and Bluesky International Limited 2025.

Declaration by FLS as an Operator.
All timber arising from the FLS National Forests and
Land represents a negligible risk under EUTR (No 995/210).

Scotland's National
Forest Estate is
responsibly
managed to the
UK Woodland
Assurance Standard.



Esri, Intermap, NASA, NGA, USGS. Sources: Esri, TomTom, Garmin, FAO, NOAA, USGS, © OpenStreetMap contributors, and the
GIS User Community