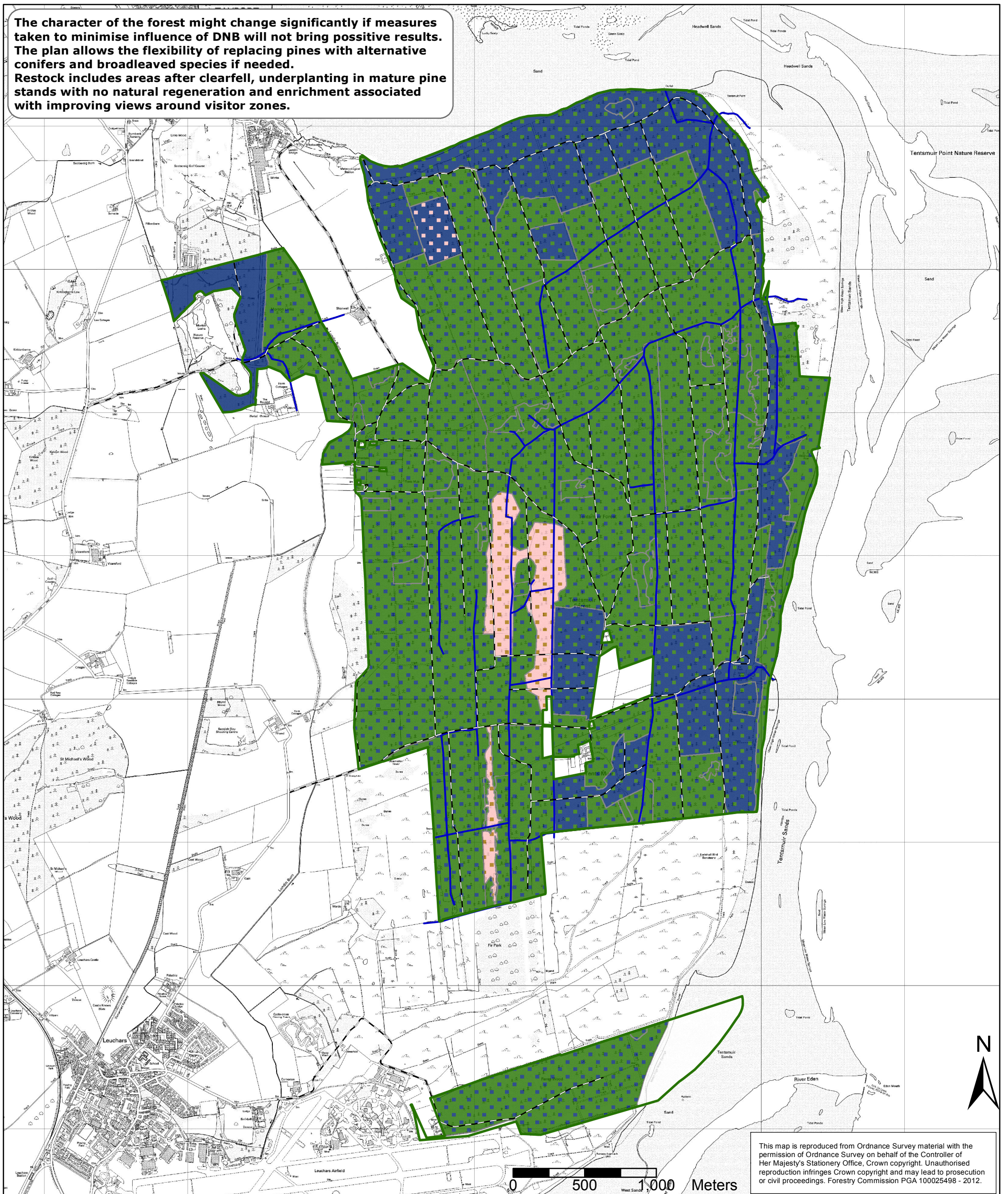


The character of the forest might change significantly if measures taken to minimise influence of DNB will not bring positive results. The plan allows the flexibility of replacing pines with alternative conifers and broadleaved species if needed. Restock includes areas after clearfell, underplanting in mature pine stands with no natural regeneration and enrichment associated with improving views around visitor zones.



This map is reproduced from Ordnance Survey material with the permission of Ordnance Survey on behalf of the Controller of Her Majesty's Stationery Office, Crown copyright. Unauthorised reproduction infringes Crown copyright and may lead to prosecution or civil proceedings. Forestry Commission PGA 100025498 - 2012.



Tay Forest District

Tentsmuir Forest Plan
 Future Habitats Map (map 5)
 Scale (A3): 1:25,000
 Date: March 2012

Legend

- Management Area
- Road segments
- Drains

- Scots Pine/Conifer
- Conifer/Scots Pine
- Broadleaved
- Conifer
- Birch/Broadleaved
- Open Land