


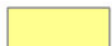



# Deadwood Ecological Potential

Scale @ A3: 1:30,000  
Date: 06/01/2026

## Legend

-  LMP Area
- Deadwood Ecological Potential**
-  HIGH
-  MEDIUM
-  LOW

## Road Classification

-  Unclassified
-  A
-  B
-  C

0 0.125 0.25 0.5 0.75 1 Km



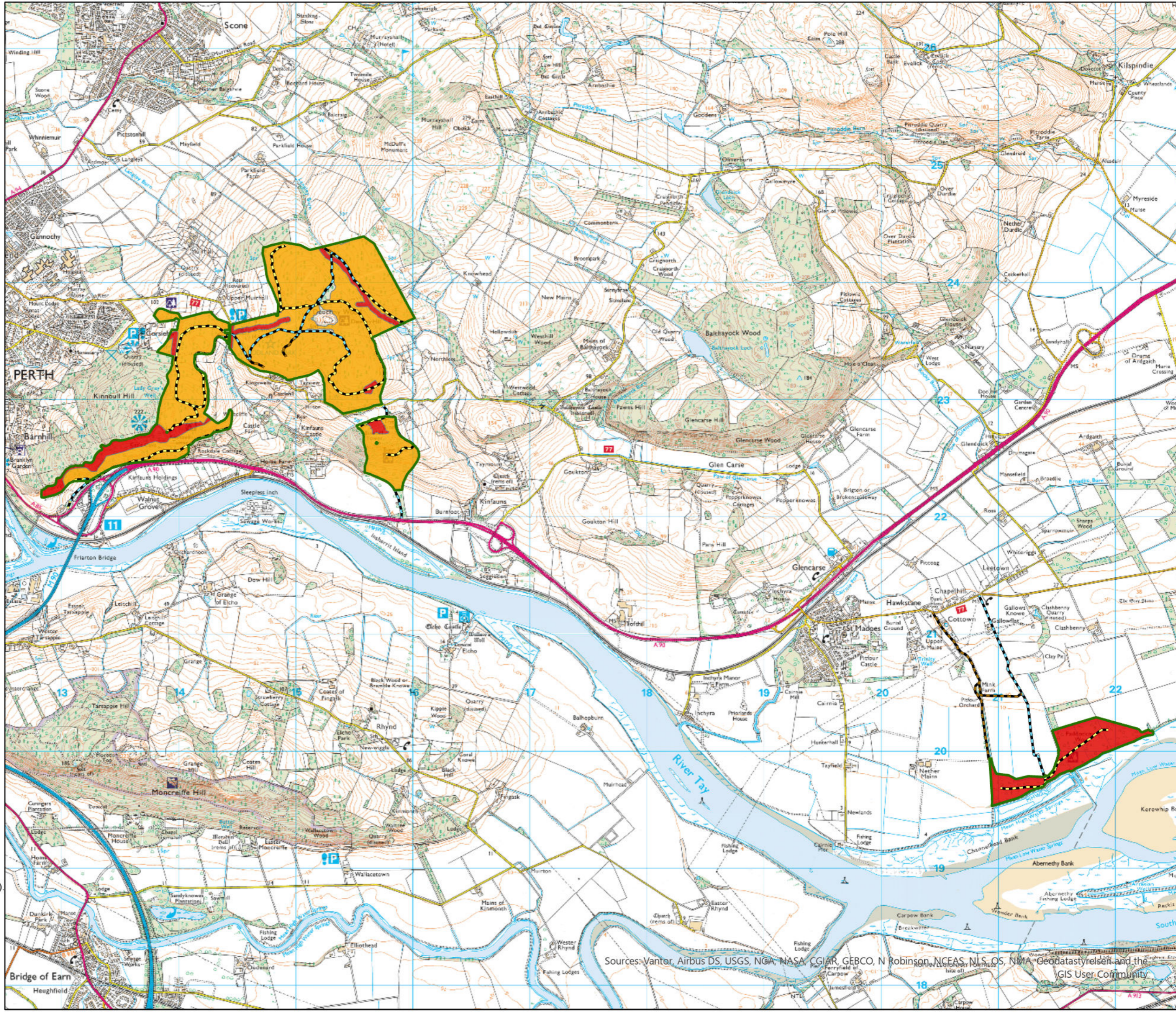
Reproduced by permission of Ordnance Survey on behalf of HMSO.  
© Crown copyright and database right [2026]. All rights reserved.  
Ordnance Survey Licence number AC0000820350.  
© Getmapping Plc and Bluesky International Limited 2026.

Declaration by FLS as an Operator.  
All timber arising from the FLS National Forests and Land represents a negligible risk under EUTR (No 995/210).

Scotland's national forests and land are responsibly managed to the UK Woodland Assurance Standard.







Sources: Vantor, Airbus DS, USGS, NOAA, NASA, CGIAR, GEBCO, N Robinson, NCEAS, NLS, OS, NMA, Geostatystrelsen and the GIS User Community