



Habitats

Author: Catriona MacIannan

Scale @ A1: 1:20,000

Date: 02/11/2022

Legend

Important Habitat Points

▲ Important Habitat Points

Important Habitat Polygons

■ Important Habitat Polygons

▨ Black Grouse (Scot.)

Forest Roads

▬ Forest Roads

Habitat Survey Polygons

■ BLANKET BOG

■ LOWLAND FEN

■ MONTANE HEATH

■ OLIGOTROPHIC OR DYSTROPHIC LOCH

■ PURPLE MOOR-GRASS & RUSH PASTURE

■ RIVERS

■ UPLAND BIRCHWOOD

■ UPLAND HEATHLAND

■ WET WOODLAND

■ Blocks

■ Blocks

■ Blocks

■ Blocks

■ Blocks

■ Blocks

■ Blocks

■ Blocks

■ Blocks

■ Blocks

■ Blocks

■ Blocks

■ Blocks

■ Blocks

■ Blocks

■ Blocks

■ Blocks

■ Blocks

■ Blocks

■ Blocks

■ Blocks

■ Blocks

■ Blocks

■ Blocks

■ Blocks

■ Blocks

■ Blocks

■ Blocks

■ Blocks

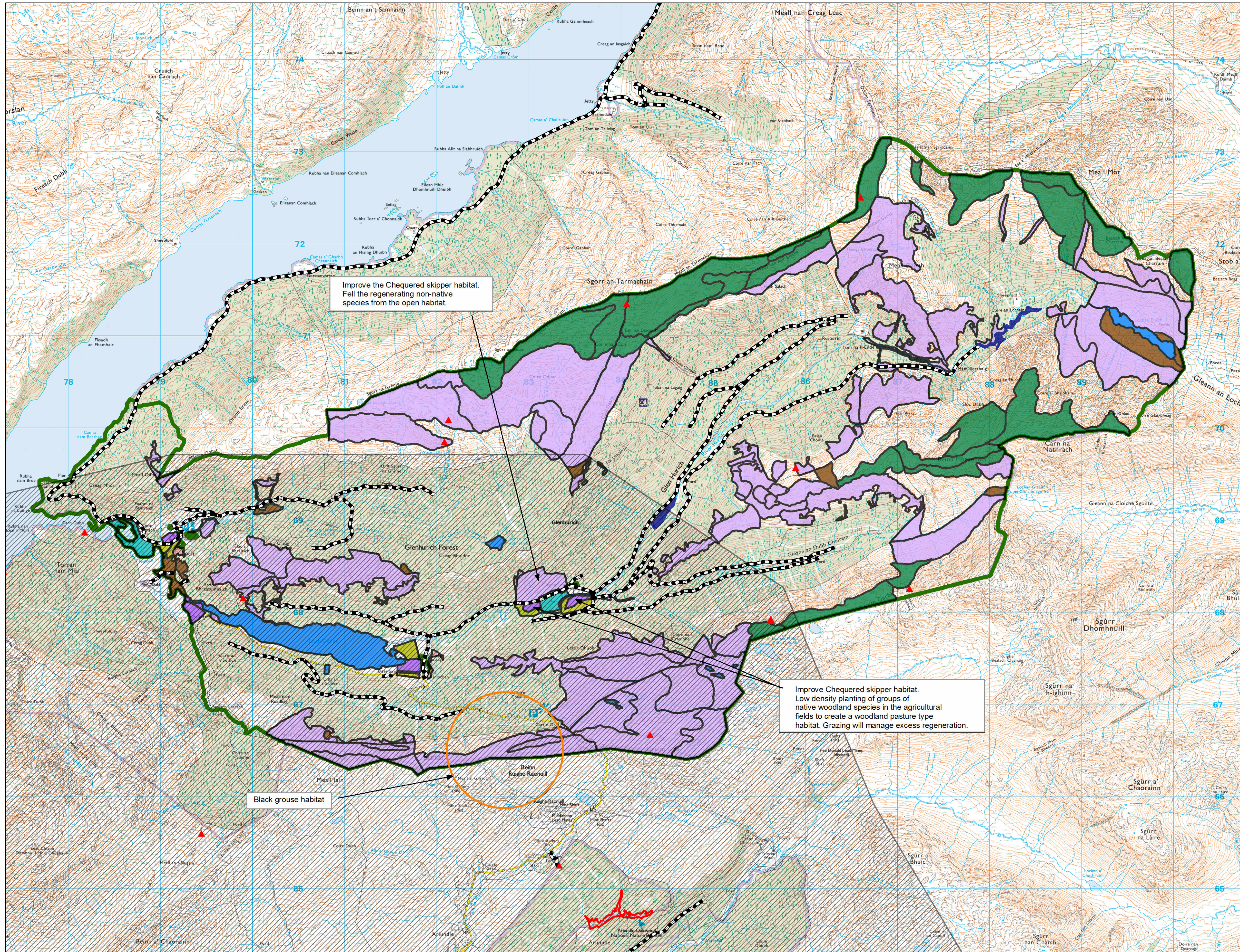
■ Blocks

■ Blocks

■ Blocks

■ Blocks

■ Blocks



Improve the Chequered skipper habitat. Fell the regenerating non-native species from the open habitat.

Improve Chequered skipper habitat. Low density planting of groups of native woodland species in the agricultural fields to create a woodland pasture type habitat. Grazing will manage excess regeneration.

Black grouse habitat

Reproduced by permission of Ordnance Survey on behalf of HMSO. © Crown copyright and database right 2022. All rights reserved. Ordnance Survey Licence number 100024925. © Getmapping Plc and Bluesky International Limited 2022.



Scotland's national forests and land are responsibly managed to the UK Woodland Assurance Standard.