

West Region

Taynuilt Land Management Plan

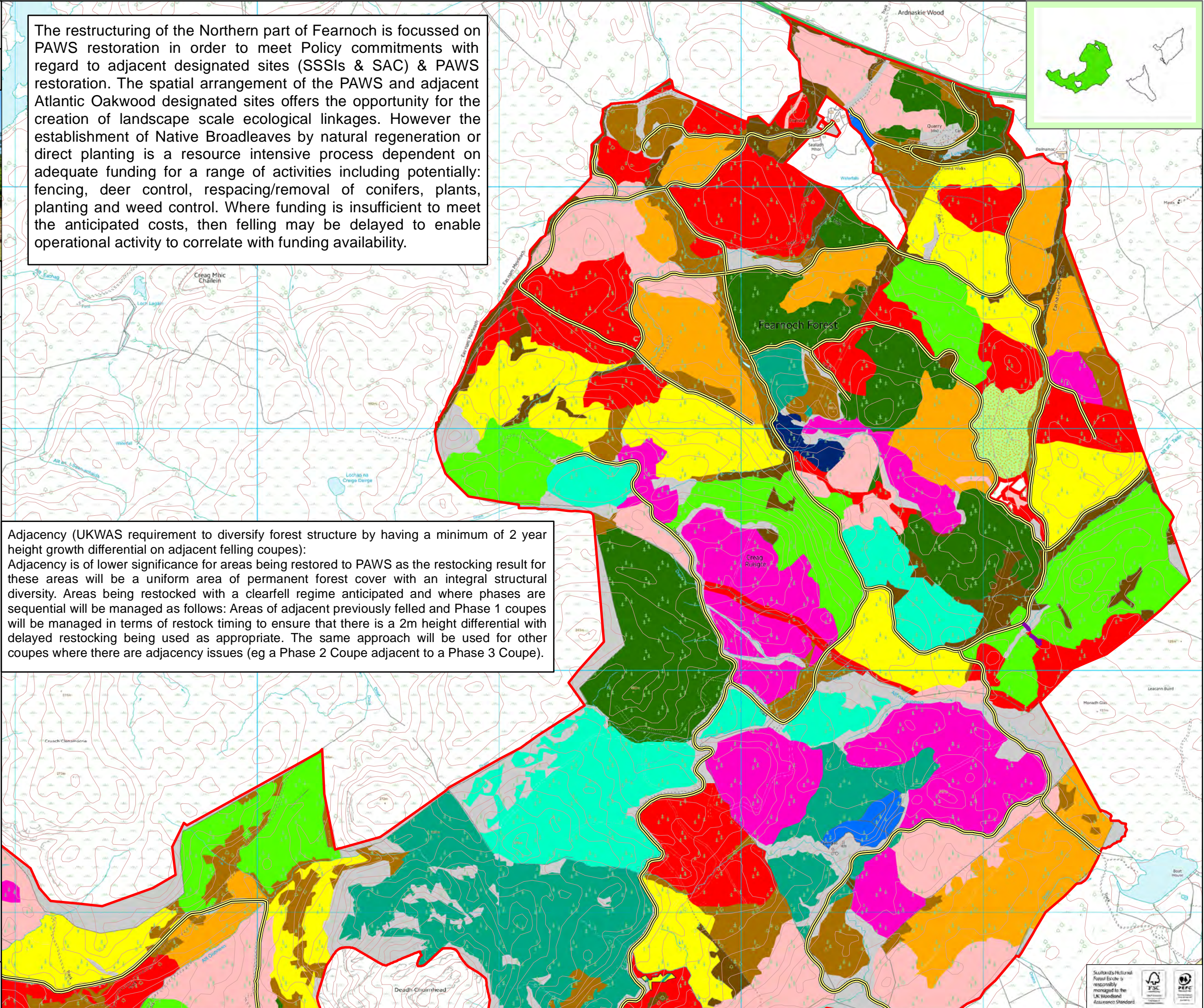


M11a: Management Fearnoch North

Legend

- Taynuilt\_Planned\_Roads
- Taynuilt\_Roads
- Taynuilt\_Plan\_Area
  
- Felling**
- Phase 1: 2020 - 2024
- Phase 2: 2025 - 2029
- Phase 3: 2030 - 2034
- Phase 4: 2035 - 2039
- Phase 5: 2040 - 2044
- Phase 6: 2045 - 2049
- Phase 7: 2050 - 2054
- Continuous Cover Forestry, CCF
- Conifer Long Term Retention, CON LTR
- Failed crop
- Felled
- Mixed Broadleaved Long Term Retention
- Native Broadleaved Long Term Retention
- Open Ground
- Other Land
- Outside Plan Period (Post 2054)
- Fearnoch CCF Phase 1 Felling Coupe
- Natural Reserve

The restructuring of the Northern part of Fearnoch is focussed on PAWS restoration in order to meet Policy commitments with regard to adjacent designated sites (SSSIs & SAC) & PAWS restoration. The spatial arrangement of the PAWS and adjacent Atlantic Oakwood designated sites offers the opportunity for the creation of landscape scale ecological linkages. However the establishment of Native Broadleaves by natural regeneration or direct planting is a resource intensive process dependent on adequate funding for a range of activities including potentially: fencing, deer control, respacing/removal of conifers, plants, planting and weed control. Where funding is insufficient to meet the anticipated costs, then felling may be delayed to enable operational activity to correlate with funding availability.



Adjacency (UKWAS requirement to diversify forest structure by having a minimum of 2 year height growth differential on adjacent felling coupes):  
 Adjacency is of lower significance for areas being restored to PAWS as the restocking result for these areas will be a uniform area of permanent forest cover with an integral structural diversity. Areas being restocked with a clearfell regime anticipated and where phases are sequential will be managed as follows: Areas of adjacent previously felled and Phase 1 coupes will be managed in terms of restock timing to ensure that there is a 2m height differential with delayed restocking being used as appropriate. The same approach will be used for other coupes where there are adjacency issues (eg a Phase 2 Coupe adjacent to a Phase 3 Coupe).

Scale: 1:15,000 @ A3



01/04/2020