

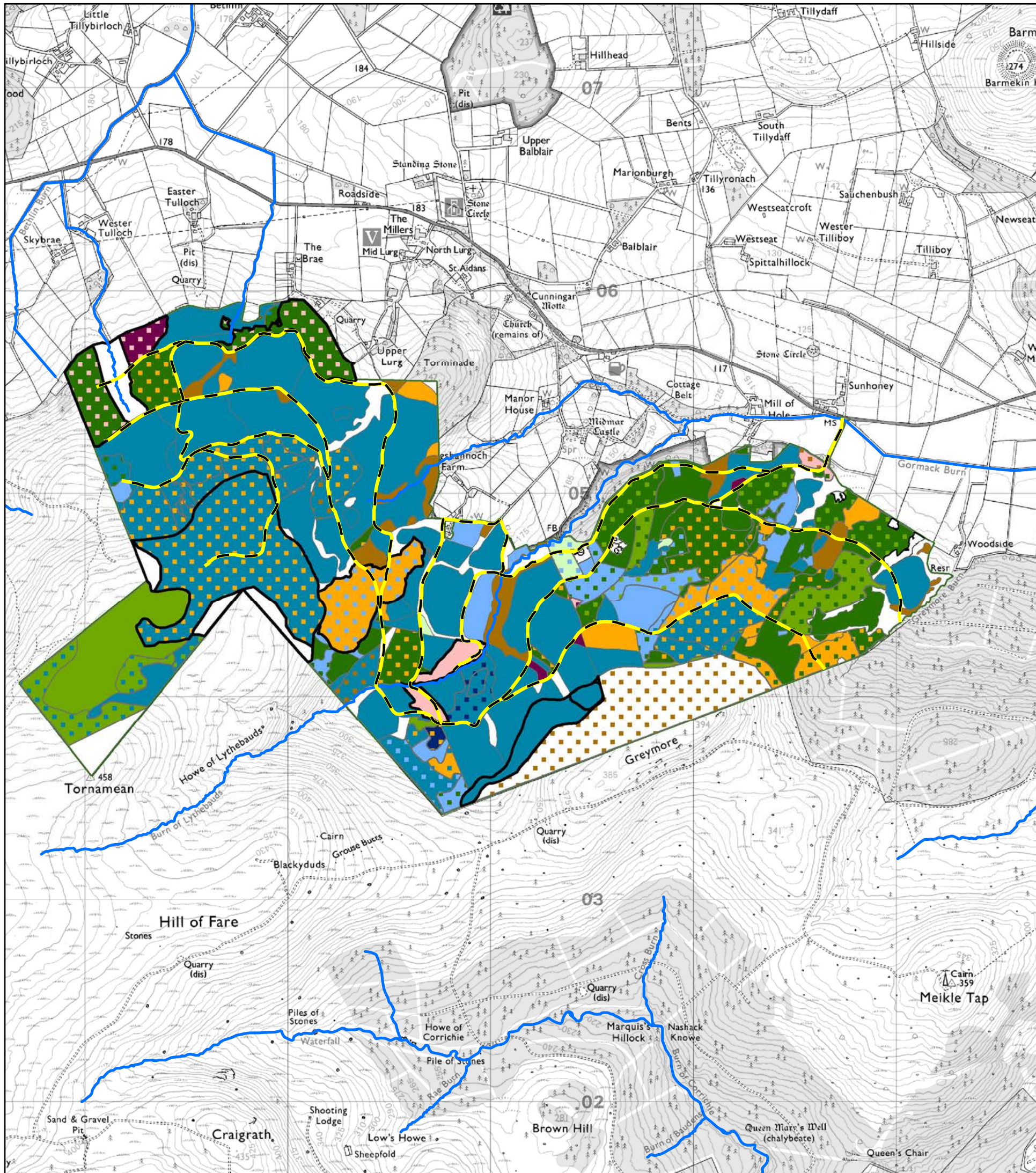
Moray & Aberdeenshire Forest District

Midmar Forest Design Plan

Map 7 Future Habitat & Species in 10 years

Scale: 1:20,000 @ A3

Date: May 2014



- | | |
|---------------------------|------------------------------|
| Midmar boundary | Lodgepole Pine/Scots Pine |
| Forest road | Lodgepole Pine/Sitka Spruce |
| Restock in period of plan | Norway Spruce |
| Quarry | Norway Spruce/Lodgepole Pine |
| Felled | Norway Spruce/Scots Pine |
| Open | Norway Spruce/Sitka Spruce |
| Open/Broadleaf | Oak |
| Birch | Oak/Birch |
| Birch/Broadleaf | Scots Pine |
| Birch/Oak | Scots Pine/Birch |
| Birch/Scots Pine | Scots Pine/Larch |
| Broadleaf | Scots Pine/Lodgepole Pine |
| Conifer | Scots Pine/Norway Spruce |
| Conifer/Larch | Scots Pine/Sitka Spruce |
| Douglas Fir | Sitka Spruce |
| Douglas Fir/Norway Spruce | Sitka Spruce/Conifer |
| Larch | Sitka Spruce/Broadleaf |
| Larch/Norway Spruce | Sitka Spruce/Larch |
| Larch/Scots Pine | Sitka Spruce/Lodgepole Pine |
| Larch/Sitka Spruce | Sitka Spruce/Norway Spruce |
| Lodgepole Pine | Sitka Spruce/Scots Pine |

