

# Map 2b: General Opportunities & Constraints

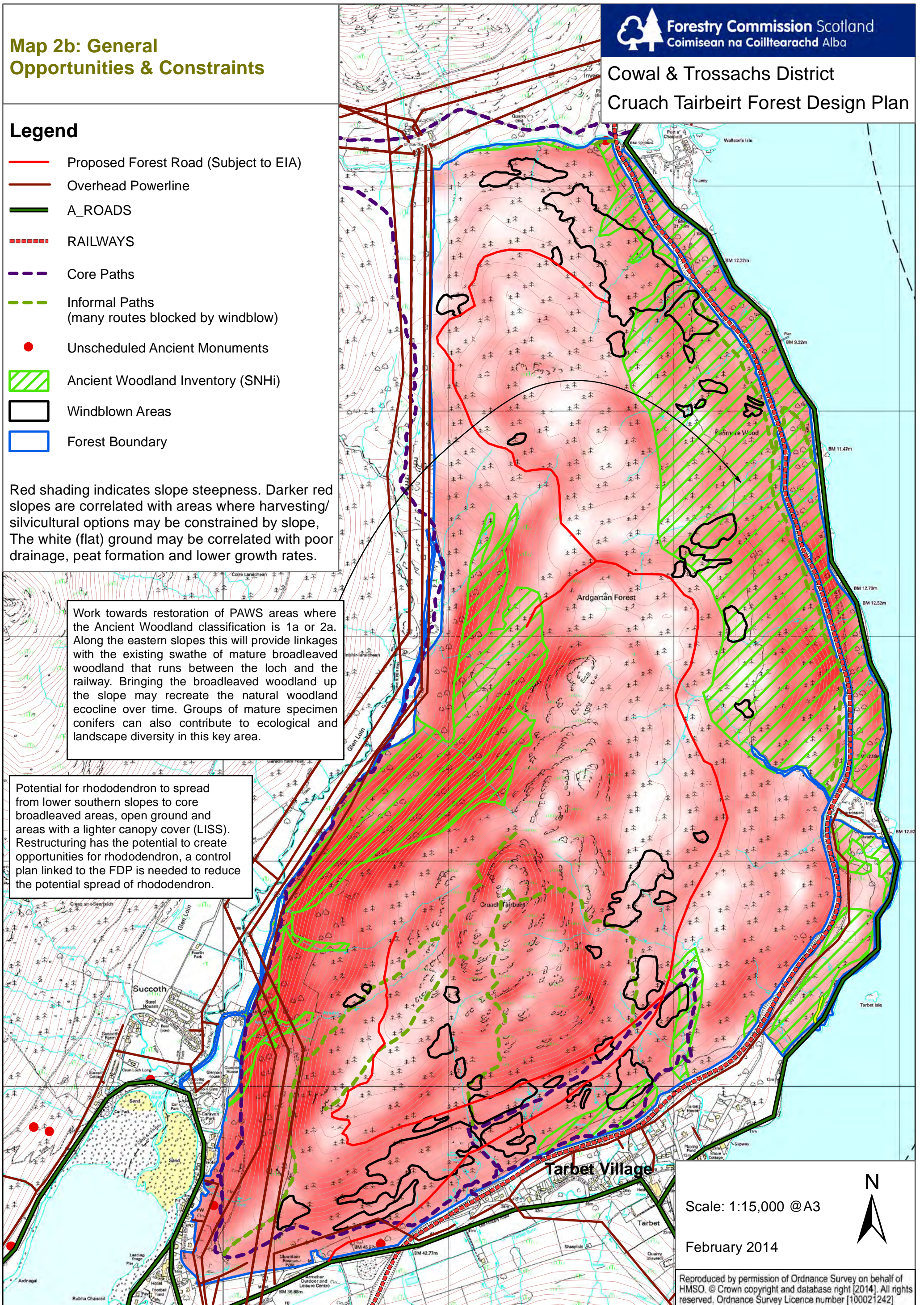
## Legend

- Proposed Forest Road (Subject to EIA)
- Overhead Powerline
- A\_ROADS
- - - - RAILWAYS
- - - - Core Paths
- - - - Informal Paths (many routes blocked by windblow)
- Unscheduled Ancient Monuments
- ▨ Ancient Woodland Inventory (SNHi)
- Windblown Areas
- Forest Boundary

Red shading indicates slope steepness. Darker red slopes are correlated with areas where harvesting/silvicultural options may be constrained by slope, The white (flat) ground may be correlated with poor drainage, peat formation and lower growth rates.

Work towards restoration of PAWS areas where the Ancient Woodland classification is 1a or 2a. Along the eastern slopes this will provide linkages with the existing swathe of mature broadleaved woodland that runs between the loch and the railway. Bringing the broadleaved woodland up the slope may recreate the natural woodland ecocline over time. Groups of mature specimen conifers can also contribute to ecological and landscape diversity in this key area.

Potential for rhododendron to spread from lower southern slopes to core broadleaved areas, open ground and areas with a lighter canopy cover (LISS). Restructuring has the potential to create opportunities for rhododendron, a control plan linked to the FDP is needed to reduce the potential spread of rhododendron.



Scale: 1:15,000 @A3

February 2014

